



The Kiwi



The Official Organ of the NEW ZEALAND SOCIETY of GREAT BRITAIN.

Affiliated to: BRITISH PHILATELIC FEDERATION
and to NEW ZEALAND PHILATELIC FEDERATION

Hon. Gen. Secretary: MRS. MARGARET FRANKCOM
Queens House, 34a Tarrant Street, Arundel, West Sussex BN18 9DJ. Tel: 0903 884139

Hon. Treasurer: E.W. LEPPARD
68 Chestnut Grove, Balham, London SW12 8JJ. Tel: 01-673 4710

Hon. Packet Secretary: B.T. ATKINSON
77 Wood Lane, Osterley, Middlesex TW7 5EG. Tel: 01-560 6119

Hon. Editor: ALLAN P. BERRY
24 Irwin Road, Guildford, Surrey GU2 5PP. Tel: 0483 67185

VOLUME 39 No. 6

NOVEMBER 1990

WHOLE 223

THE NEXT MEETING WILL BE HELD ON SATURDAY, 24TH NOVEMBER, 1990,
AT THE Y.W.C.A. CENTRAL CLUB, 16 - 22, GREAT RUSSELL STREET,
LONDON, WC1B 3LR, STARTING AT 11.00 A.M.

IT IS KIWI DAY

AND STARTS AT 11.00 A.M. WITH THE ANNUAL GENERAL MEETING.
THE AUCTION WILL COMMENCE AT 1.45 P.M.

39TH ANNUAL GENERAL MEETING OF THE NEW ZEALAND SOCIETY OF GREAT BRITAIN

Notice is hereby given that the 39th Annual General Meeting of
the New Zealand Society of Great Britain will be held at the
Y.W.C.A. Central Club, 16 - 22, Great Russell Street, London,
WC1B 3LR, on Saturday, 24th November, 1990, commencing at 11 a.m.

AGENDA

1. Minutes of the 38th Annual General Meeting.
2. President's Report and Review of 1990.
3. Financial Report from the Hon. Treasurer.
4. a) Report from the Hon. Packet Secretary.
b) Changes in the Packet Rules - see Page 101.
5. Report from the Hon. Postal Auctioneer.
6. To elect
 - i) A President.
 - ii) Vice Presidents
 - iii) A Chairman.
 - iv) A Vice-Chairman.
 - v) An Hon. General Secretary.
 - vi) An Assistant General Secretary.
 - vii) A Packet Secretary.
 - viii) An Honorary Treasurer.
 - ix) Other Officers of the Society.
7. To elect a Committee.
8. Any other business proper to the Annual General Meeting of
which due notice has been given in writing.

Nominations are invited from Members for the above posts having
obtained the agreement of the member so nominated.

MARGARET FRANKCOM, HON. GENERAL SECRETARY

EDITORIAL

This, the last issue of 'The Kiwi' for 1990, marks the end of an eventful year for philately as a whole and for New Zealand philately in particular. The two International Philatelic Exhibitions, Stamp World London 90 and New Zealand 1990, were both events well supported by our Society. Spring Stampex saw the publication of 'New Zealand - A Philatelic Miscellany' at the display put on by the Society. Autumn Stampex / B.P.E. was similarly well supported, with members gaining significant awards. There has also been some sadness, with the death of Marcel Stanley, mentioned in the last issue. As we go to press, we have learnt of the death of Marion, the wife of our member Gerald Elliott, to whom we extend our sympathies.

Our activities must continue and the Society advance. I wish you all a very Happy Christmas, and all success in the New Year.

ALLAN P. BERRY

MEMBERSHIP

NEW MEMBERS. We welcome

B.E.R.Alexandre, P.O.Box 949, Christchurch, New Zealand.
N.Hart, P.O.Box 28363, Remuera, Auckland 5, New Zealand.
R.E.Jones, 37, Ventress Farm Court, Cambridge, CBl 4HD.
G.J.Millard, 661, Worcester Street, Christchurch 6, New Zealand.
G.Sanders, P.O.Box 13-608, Christchurch, New Zealand.
Mrs. M.B.Sinclair, Hautapu Road, R.D.3, Hamilton, New Zealand.

DECEASED

E.Fisher, 319, Green Lane, Chertsey, Surrey.
M.C.Stanley, P.O.Box 219, Waikanae, New Zealand.

CHANGE OF ADDRESS

W.A.Jackson, 179, Soleares Avenue, Mount Pleasant,
Christchurch, New Zealand.

(previously of Bahrain.)

L.J.Kimpton, 12, Riverbank Way, Glossop, Derbyshire, SK13 8SN.
(previously of Solihull.)

MEETING HELD SATURDAY, 29TH SEPTEMBER, 1990.

Alan Baker, our Chairman, opening the meeting at 2.30 p.m. with 20 members attending, welcomed Lt. Col. and Mrs. E.W.Amos and Brian Maynard, two members attending a meeting for the first time. Apologies for absence were received from John Smith, Alan Gardiner, Ann Carter, Gwynn Evans and Ian Fogg. Allan Berry was invited to say a few words about New Zealand 1990, and reported that 'New Zealand - A Philatelic Miscellany' had been awarded a Silver Medal, and Volume 38 of 'The Kiwi' a Silver-Bronze Medal. Copies of the reviews of the book were present in a folder for those present to peruse. Alan Baker then handed over to Tom Hetherington.

MUSINGS - TOM HETHERINGTON

Over several years Tom had published in 'The Kiwi' various articles under the general heading 'Musings'. His display was of the many diverse subjects that had provoked the questions raised in his Musings, some answered, many not. 'Tatts' mail was shown

with a four day journey from Wellington to Hobart showing the importance of Bluff in transporting early mail to Australia. A sweepstake on the Melbourne Cup commencing in 1881 was still being run during World War 11. Tom also showed how additional finds could be made by looking for contents in First Day Covers, and illustrated the point with a leaflet from the Returned Servicemen Association found in a First Day Cover of the 1936 ANZAC stamps. He also showed the official booklets for the 1935 Pictorial Definitives, the 1940 Centennial Commemoratives, the 1946 Peace Issue and the 1950 Canterbury Centennial issue. Tom asked the question why the sailing vessel 'Macquarie' was used to illustrate the 1940 Centennial Commemorative booklet when so far as he could determine, the vessel had never been to New Zealand. There followed a page of stamps bearing 'island' cancellations - Waiheke Island, Green Island, Great Barrier Island and Fanning Island. A 'Colenso' cover reminded those present of our late member Betty Mitchell from Cornwall, herself a descendant of Colenso, who had written articles for 'The Kiwi'. The cover with the air mail routing cachet was shown, which led to the discovery of much further material. Eleven large essays for the 1935 Pictorial Definitives, by C.H. and R.J.G. Collins were also shown, with comments on the different colours in which they were found. Military Mail from World War 11 sent from the Pacific revealed a previously unrecorded Censor Mark in blue reading 'PASSED BY / BASE / CENSOR' in three lines. The question was asked if the Palmerston North Parcels cancellation could be considered the largest circular datestamp of New Zealand. For the Cinderella collector, Tom showed the grey B.P. label showing Edmund Hillary at the South Pole, with the questions still unanswered, where and when was it issued?

THE LAST TEN YEARS - ERNIE LEPPARD

Ernie Leppard arrived with a suitcase full of the issues of the last ten years, but was able to show only the definitive issues, with the numerous imprint, plate and reprint markings used by Leigh Mardon. The 5 cent Carnelian reprint with its flight of seven Kiwis was the largest number so far recorded. Shown were issues of Maori Portraits, Map Stamp, Gemstones, Fruit, the Bird series, Scenic Stamps and Booklets, all in plate blocks and complete with reprints.

In thanking Tom Hetherington, Allan Berry remarked that as Editor, Tom's 'Musings' had spawned many informative articles. Tom had the facility to look and see, and to use lateral thinking that was a lesson to us all.

Alan Baker, in thanking Ernie Leppard, described him as the 'Pooh-Bah' of the Society, able to produce material on any subject. The display was most interesting, but demonstrated just how much had to be collected from the exuberant emissions just to keep up to date!

E.W.L.

MARCEL CHARLES STANLEY, OBE, RDP, FRPSL, FRPSNZ.

With deep regret we record the death of Marcel Stanley on 24th July, 1990, after a brief illness which commenced at the same time

as the accident to his wife, Rita, at Santa Barbara in late March. Because of his illness he was unable to attend Stamp World London 90 and had to relinquish the position of Jury President for World Stamp Exhibition New Zealand 1990.

Marcel joined the Philatelic Society of New Zealand (later The Royal) in 1937, serving on the Council from 1959 to 1990. He was made a Fellow in 1963 and Council Chairman in 1965. In 1977 he was elected President and served in that capacity until 1988.

He joined the Royal Philatelic Society of London in 1961, became a Fellow in 1968 and was official representative in New Zealand from 1976.

At Exhibitions he received many high awards for his collections, both in New Zealand and overseas. He won the Grand Prix d'Honneur at Amsterdam in 1967 for his superb collection of New Zealand Chalon Head stamps, Grand Prix International at Stampex '86, Adelaide, for "New Zealand Incoming Mail". His exhibit of stamps of British North America with Chalon Portraits won the Grand Award at Tarapex '86. Entries of New Zealand Postal History 1855 - 1874, New Zealand Booklet Stamps, Essays, Proofs and Specimens all received high awards.

He published articles on his researches, on Chalon Head stamps and electrotype booklet stamps, and contributed the chapters on these stamps and on proofs and essays in Volume VI of the Postage Stamps of New Zealand.

He was Chairman of the Committees for the very successful exhibitions Welpex '72 and Royal 100 (1988).

He was involved in exhibition judging for over 20 years and was Chairman of the Jury at Zeapex '80. He also served as an international judge for many years.

Marcel was President of the Federation of New Zealand Philatelic Societies in 1965 and recipient of the Award of Merit in 1965 and 1970 and Award of Honour in 1971. He was elected to sign the Roll of Distinguished Philatelists at the Norwich Congress in 1971.

In June this year he was awarded the O.B.E. in the Queen's Birthday Honours, for outstanding services to philately.

He was sadly missed at NEW ZEALAND 1990.

K.J. McNAUGHT, President,

Royal Philatelic Society of New Zealand.

WORLD STAMP EXHIBITION - NEW ZEALAND 1990

AUCKLAND, 24TH AUGUST TO 2ND SEPTEMBER, 1990

Over thirty members of the New Zealand Society of Great Britain were recorded as having attended New Zealand 1990, New Zealand's first International Philatelic Exhibition to be held under the auspices of the Federation Internationale de Philatelie.

The Exhibition, opened by the Governor-General, Sir Paul Reeves, comprised 3,060 frames, with 650 entries from over 50 countries, and an additional 120 entries in the Literature Sections. Many familiar names were included in the list of exhibitors and many received well deserved awards.

The Court of Honour, which comprised, amongst others, displays from the Royal Philatelic Collection, the National Postal Museum, London, and the archives of New Zealand Post Limited, was well

attended. The Philatelic Youth Council stand attracted many visitors, thus fulfilling its function of providing amusements as well as philatelic interest for the youngsters.

At the close on 2nd September, 1990, it was estimated that over 45,000 people had visited the Exhibition - a fine effort from a country with a population of under three and a half million. The Organising Committee had worked hard to make the Exhibition a success, and certainly achieved that aim.

Congratulations, New Zealand 1990!

Congratulations to the following members of the New Zealand Society of Great Britain who gained awards for New Zealand material in New Zealand 1990:-

Large Gold Medal with Special Prize -

- Gerald J. Elliott.

Gold Medal

- Royce Bowen, Barry Scott, Bernd Koningham.

Large Vermeil Medal with Felicitations of the Jury -

- Allan P. Berry.

Large Vermeil Medal - Colin Capill.

Vermeil Medal with Felicitations of the Jury -

- Donald White.

Vermeil Medal

- Patricia Capill, Robert Darge,

Large Silver Medal

- Martyn D. Jackson,

Silver Medal

- Allan P. Berry - for 'New Zealand - A Philatelic Miscellany'.

Silver-Bronze Medal

- Allan P. Berry - for 'The Kiwi', Volume 38, 1989.

In addition, Gerald J. Elliott showed his collection 'New Zealand Mails to Overseas - pre 1874' in the F.I.P Championship Class. A section of his Chalon Collection was also displayed in the Court of Honour.

A.G.

MEETING HELD ON MONDAY, 27TH AUGUST, 1990

IN THE SEMINAR ROOM AT THE INTERNATIONAL STAMP EXHIBITION,
NEW ZEALAND 1990.

The Meeting was opened at 3.05 p.m. by John Watts, 'Our Man in New Zealand', with the announcement that this was the first meeting of the New Zealand Society of Great Britain to be held outside the United Kingdom and that it was most appropriate that it should be held in New Zealand at this historic Exhibition.

Sixteen members and four guests were present and apologies had been received from five members who were unable to attend.

John then introduced Allan P. Berry and invited him to talk on the subject of editing and producing the book 'New Zealand - A Philatelic Miscellany'.

In outlining how the concept of the book came about, Allan explained how, on the death of our member Stanley Cross-Rudkin,

his widow had offered a sum of money with the object of providing a Society Trophy in memory of her husband. As the Society had an adequate number of trophies for all purposes, the Committee requested that it be allowed to use the money to finance, in part, the production of a book to be published in the year of New Zealand's Sesquicentennial, and dedicated to the memory of Stanley Cross-Rudkin. This was agreed, and the process started.

Allan detailed the stages required, from soliciting articles from members to producing the camera-ready art-work. The cover was produced using outline maps of New Zealand originally produced for collectors by Robson Lowe. The British Library Philatelic Collections were kind enough to allow coloured illustrations of the famous 'Dwarf' and the piece showing the earliest known use of New Zealand's stamps, both from the Tapling Collection, to be used on the cover. The printer's advice and assistance was gratefully acknowledged, as was the fact that the cover was produced by the printer at cost. All this enabled the final product to be offered at a very competitive price.

The arrival of the finished books did not mean an end to the trials and tribulations. At least six copies had to be sent to Copyright Deposit Libraries, and numerous other copies had to be sent out for review purposes, as sales outside the Society largely depend on such publicity.

At last, the book was launched at Spring Stampex 1990, with the first copy, hard bound and cased, being presented to His Excellency Mr. Bryce Harland, the High Commissioner for New Zealand, who had kindly written the Foreword.

Now, with sales mounting, there was time to reflect on the whole exercise, and to find the answer to the question, 'would I go through it all again?'.
After a few questions from the floor had been answered, John Watts proposed the vote of thanks and closed the meeting at 4.30 p.m.

After a few questions from the floor had been answered, John Watts proposed the vote of thanks and closed the meeting at 4.30 p.m.

Allan P. Berry also gave a display and talk to the Postal History Society of New Zealand on 27th August, 1990, on his 'Official Postal Stationery pre-1907'. On show were covers showing examples of franking signatures, facsimile handstamp signatures, printed franks, authorised superscriptions, medallion franks, and some special service covers, such as mail on Volunteer Militia Business, some covers from Universities and Exhibitions, and Special Events. It concluded with mention of the arrangements made for Official Mail after New Zealand joined the Universal Postal Union.

In his vote of thanks, the President, Chris Foote, said that, although the items on display might not be acceptable in some quarters as 'legitimate' postal stationery, they were worthy of exhibiting as an important and historical part of the postal heritage.

A.G.

NEW ZEALAND PHILATELIC FEDERATION AWARD OF HONOUR

On 26th August, 1990, at a Reception held by the New Zealand Philatelic Federation in the Logan Campbell Room, Vacation Inn - Logan Park Hotel, Auckland, and in the presence of some 200

invited guests, Allan P. Berry received from the President, Dr. Robin Gwynn, the Federation's highest accolade, the Award of Honour, for his outstanding services to New Zealand philately.

I am certain that all members of the New Zealand Society of Great Britain will applaud this well-deserved award and join me in congratulating Allan.

ALAN GARDINER, VICE-PRESIDENT

SHOREX '91

Now that the International Philatelic Exhibition, New Zealand 1990, has come and gone, plans have been set in motion for the next New Zealand National Stamp Exhibition, SHOREX '91, to be held at The Glenfield Centre, North Shore City, Auckland, New Zealand, during Labour Weekend, 25th to 28th October, 1991. The Exhibition is being held with the patronage of the New Zealand Philatelic Federation. The Chairman of the Jury will be our member John Murr.

Further details may be obtained from the Exhibition Secretary - Mrs. Monica Bardet, P.O.Box 5072, Regent, Whangarei, New Zealand.

AUTUMN STAMPEX / B.P.E. 1990

Congratulations to the following Members who gained awards in Autumn Stampex / B.P.E. 1990:-

Small Silver Gilt Medal, and the Windsor Plate for the outstanding 20th Century entry in the Traditional (Commonwealth) Class - D.J.Holmes.

Silver Medal - Allan P. Berry; Mrs. S.Terry.

Bronze-Silver Medal - J.G.Evans; E.W.Leppard.

Congratulations also to D.J.Armitage, who was awarded a Bronze-Silver Medal in Class A of the Melville National Youth Stamp Competition.

REVIEWS

Postmark Taranaki - Supplement Updated to July, 1990. Published by the Taranaki Philatelic Society, P.O.Box 628, New Plymouth, New Zealand, price NZ\$8-00, plus NZ\$2-00 surface postage anywhere, or NZ\$6-80 air mail to the United Kingdom.

This is a supplement to the Volume produced in 1986. It lists changes to post offices that have come about since that year under the auspices of New Zealand Post Limited. It illustrates examples of postmarks and handstamps used in the last four years. A very useful publication for those who wish to keep up to date with the changes in the Taranaki District of New Zealand.

Cinderella Apteryx & Other Family Members - A Catalogue of New Zealand Cinderellas Featuring Birds. Compiled by T.Maclaren, Oxford Cinderellas, Bush Road, Oxford, North Canterbury, New Zealand, to whom enquiries should be addressed.

Seldom have I seen a more comprehensive catalogue devoted to any Cinderella theme. For any collector, serious or casual, of New Zealand Cinderellas featuring Birds, this 38 page, spiral bound A4

booklet lists nearly 200 items. The maximum amount of information is given in the most economical way.

The author's 'boundaries' are labels that have at some time had adhesive backing. This listing dates from 1895 to 1989 and the birds depicted range from a small part of the label design to being the major part; some are stylised whilst others are faithful reproductions of the bird.

Ideas for expanding your collection, cigarette cards, post cards, etc., are mentioned, as are also New Zealand postage stamps depicting birds. There is a classified list of all the birds catalogued in the appropriate scientific order, with common names, latin names and, where there is one, the Maori name. Finally, there is a list of useful addresses where the collector can get more information.

Reprint of 'Priced Catalogue of the Pigeon Post Stamps, and Flown Covers of New Zealand, 1932 - 1933', by R.J.G.Collins (2nd, 3rd, and 4th Editions of this work). Produced by the Christchurch (N.Z.) Philatelic Society (Inc.), P.O.Box 29, Christchurch, New Zealand, to whom enquiries should be addressed.

This volume is subtitled 'No. 1 - in a series of reprinted endangered publications'. Whilst appreciating the rarity of the original copies I am sorry that this foolscap, spiral wire-bound catalogue was not re-typed before being issued. It would have been better on A4 paper and far easier to read.

It contains a mass of information previously unavailable to the average collector but I am sure that most people would rather be able to read that information than struggle with the very poor copies contained in this volume.

Index to Captain Coqk, Newsletter of the Christchurch (N.Z.) Philatelic Society. Compiled by L.J.G. & M.A.Franks, and published by the Christchurch (N.Z.) Philatelic Society, P.O.Box 29, Christchurch, New Zealand, to whom enquiries should be addressed.

The indexing of 2,200 pages of Captain Coqk from 1972 to 1989 must have been a mammoth task, even with the use of a computer. Whilst annual indexes have been published this time the articles have been classified by their content. The 66 A4 spiral bound pages list the year referred to in the article, the article content, author, year of publication and page number. A useful reference work for anyone who wishes to refer to earlier writings.

New Zealand 1990 Catalogue. Published by World Stamp Exhibition New Zealand 1990, P.O.Box 4069, Auckland, New Zealand, price NZ\$5-00.

This catalogue contains all the information previously published in the 'Bulletins' and adds much, much more. Sadly, the first article after the list of Commissioners and Members of the International Jury is an Obituary to Marcel Stanley, a collector whose eminence few can hope to emulate.

The major awards are illustrated with an article on their designs plus a list of the donors of all the special prizes. The special datestamps are all illustrated.

Three fascinating articles are included, by Dr. Robin Gwynn on 'The Victorian New Zealand "Sidefaces"'; 'The New Zealand Government Life Insurance Department', by Allan P. Berry; and on 'British Antarctic Expedition 1907 - 1909', by R.J.Duns.

The Exhibits in the Court of Honour are all listed with descriptions of their contents and some photographs of items from the Royal Philatelic Collection. All Exhibitors are included with an outline of their individual exhibits.

A fine memento of what, by all accounts, was a very fine Exhibition.

The 1990 New Zealand Post Offices Cancellation and Postmark Guide. Compiled by Richard Wooders. Published by New Zealand Philatelic Brokers Ltd., P.O.Box 80-226, Green Bay, Auckland, New Zealand. Price NZ\$50-00.

This A4 spiral bound book has been well produced and should give many years of useful service to Postal Historians interested in New Zealand. The various types of postmarks are illustrated and the post offices opened since 1840 are listed alphabetically in two sections, those that have closed, and those that are still open and in use. It is sad to see how little of the volume, 16 pages out of over 150, is devoted to open offices.

The information is clearly displayed showing district, opening and closing dates, scarcity rating, whether or not manuscript cancelling was used and the types of cancellation used, plus indication of the type of services available at those offices that are still open.

A valuable work of reference and a guide to further works for those requiring more specialised information.

CHANGES IN PACKET CIRCULATION ARRANGEMENTS

The company with which the Society insures its packets, library and trophies has imposed a new condition that packets will not in future be covered unless they are sent by Registered Post or passed on by hand. This has important implications, and the matter will be before the Annual General Meeting on 24th November, 1990, for decision. The following note is to inform members of the background and to set out the Committee's recommendations.

At present, two types of packet are in circulation. The first is sent by hand or by Recorded Delivery, and was covered by the Society's insurance. The second, containing higher value material, is circulated by hand or by Registered Mail; it is insured only to the extent covered by the terms of the Registration while in the mail and is otherwise the responsibility of the member in possession.

As a result of the insurance company's revised terms, we are not now covered for the Recorded Delivery packet. The Packet Secretary is therefore sending out no new packets of this type pending the decision of the Annual General Meeting.

In considering the implications of the changed circumstances, certain principles have been borne in mind:-

- (a) The packet provides an important service to members of the Society and should be brought back into full operation as quickly as possible.

(b) Vendors should be protected and purchasers encouraged.

(c) The Society should not be put into a position of financial risk.

It is apparent that any course of action is likely to impinge on one or more of these principles, and a balance must therefore be struck. In considering insurance it is worth remembering that the cost is likely to rise. The existing policy - which is substantially cheaper than others - covers packets up to a value of £900 each, and the premium which is currently about £245 a year, depends on the number of sendings and the total value. The greatest risk is during transit and as the company now requires this to be by Registered Post the benefit of insurance is limited. Insurance of Registered Mail is provided by the Royal Mail up to £950 for the minimum fee of £1-75 plus first class postage, and this can be increased in stages up to £2,200 for a fee of £2-20 plus first class postage.

In the circumstances, the Committee considers that the Recorded Delivery packet should be discontinued and will be recommending the following to the Annual General Meeting:-

1. All packets to be circulated by hand or by Registered Post.
2. The value of the material in each packet to be limited to the insurance cover provided by Royal Mail.
3. No other insurance to be provided by the Society and members to be responsible for packets while in their possession.
4. The packet rules to be amended to provide for these new arrangements.
5. Before receiving further packets members to be asked to sign a statement accepting the new rules.
6. Any member not complying with the rules to be held responsible for consequential losses.
7. The Committee and Packet Secretary to be authorised to prepare the revised rules and administer the packet on the new basis.

I hope members will agree that these recommendations present the best way forward, and will continue to give their support to the packet both as vendors and purchasers. The Committee will be monitoring the situation during the next year and will welcome comments. A not unimportant aspect is that the packet makes a substantial contribution to the General Funds, equivalent in the past few years to nearly £3-00 per member.

ALAN BAKER, CHAIRMAN

COMPETITION - WOT ME?

Yes, you! And you and you and all of you. Why not enter next year's competitions - you may enjoy the experience, you will almost certainly learn something new about your stamps, and you may even win!

It is such a great shame when, as sometimes happens, there are not really enough entries to keep the Judge busy and it can be

rather embarrassing in view of the eminent philatelists who have been kind enough to do this work in the past and, we hope, in the future.

There are a number of classes so that at least those of us who collect more modern material do not have to compete against the Chalons and other classic issues. There are some splendid trophies on offer to both winners and runners-up so why not resolve now to do something about it.

What do you need in order to enter?

1. A sense of humour. Always remember that however knowledgeable and impartial a Judge may be it is almost inevitable that he will prefer some items to others and possibly be influenced by such things as the type of album leaf you use or your chosen method of writing-up. How else can one explain that an entry can be ignored by one Judge and, a couple of years later, virtually unchanged and only entered to keep numbers up, win its class. You need to be able to smile - or at least grimace - when things go wrong and at the same time to take note both of the Judge's comments and the other entries.
2. Some material. This obviously needs to be reasonable to compete in a specialist society and, probably just as important, you will have to demonstrate your knowledge of your chosen subject.
3. Some time. Or at least the willingness to give time and unless you are already an expert you will surely find this well spent and, above all, educational.
4. Read the rules. Yes, I know this sounds elementary but people still assume that twelve sheets means eleven or thirteen and that does not give a good start.

The Committee has given much thought to the structure of the competitions in recent years and ideas for past winners, novices, and thematic classes are being bandied about at the moment. It is suggested that from now on, 10% of the marks should be left to the Judge's discretion and that classes should be amalgamated if there are three entries or less.

So please do something about it. We have probably all said that our material is not good enough or that it is not written up. You will not know about the first until you try and the answer to the second is all too obvious! If you will once put your foot in the water I am sure you will find it great fun and, to me at least, that is what it is all about.

Perhaps as a final thought, do please remember that whilst in this great hobby of ours nobody can tell us what to collect or how to collect it, there are rules and conventions when competing and you will ignore these at your peril.

Lots of entries next year, please.

J.A.W.SMITH, PRESIDENT

DISPLAYS TO LOCAL SOCIETIES

Our Member, C.P.R.Goodwin, will be giving a display of New

Zealand material to the Solihull Philatelic Society on Tuesday, 13th November, 1990. The Society meets at the Solihull Tennis/Cricket Club Pavilion, Tippetts Field, Solihull, and the meetings start at 7.30 p.m.

C.P.R. Goodwin will also be giving a display to the Southwick Philatelic Society on Monday, 21st January, 1991. Further details may be obtained from the Secretary, M.E. Moore, 17, Underdown Road, Southwick, Brighton, BN4 4HN.

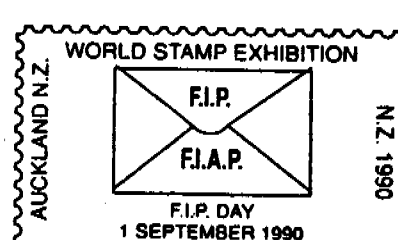
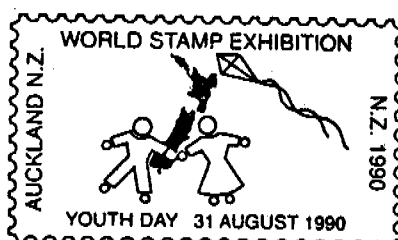
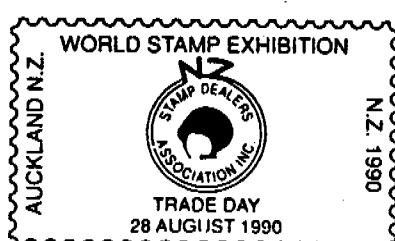
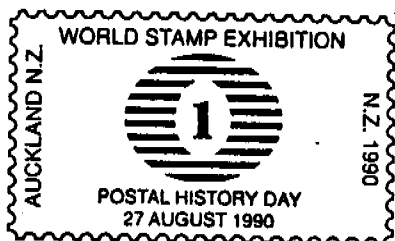
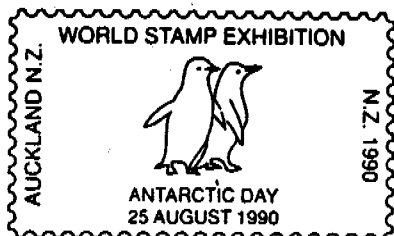
SPECIAL DATESTAMPS

GREEN LANE HOSPITAL CENTENARY



A special pictorial date stamp was used at the Auckland Philatelic Sales Centre on Friday, 24th August, 1990, to commemorate the Centenary of Green Lane Hospital.

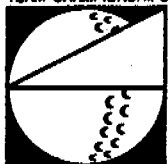
WORLD STAMP EXHIBITION NEW ZEALAND 1990



Ten special theme day date stamps were used at the New Zealand Post Stand at the World Stamp Exhibition, New Zealand 1990, held at the Expo Centre, Auckland, from 24th August, 1990, to 2nd September, 1990.

WORLD AMATEUR GOLF TEAM CHAMPIONSHIPS

WORLD AMATEUR GOLF
TEAM CHAMPIONSHIPS



CHRISTCHURCH N. Z.
18 OCTOBER 1990

A special pictorial date stamp was used at the Christchurch Philatelic Sales Centre on 18th October, 1990, to mark World Amateur Golf Team Championships.

13TH WORLD ORCHID CONFERENCE



A special pictorial date stamp was used on the first day at the New Zealand Post Stand at the 13th World Orchid Conference held at the Expo Centre, Auckland, from 10th September, 1990, to 16th September, 1990. A second pictorial date stamp with movable dates was used on the subsequent days of the Conference. The Conference was open to the public from 12th September, 1990.

4TH INTERNATIONAL HERITAGE ROSE CONFERENCE



A special pictorial date stamp was used at the Christchurch Philatelic Sales Centre on Friday, 23rd November, 1990, to mark the 4th International Heritage Rose Conference.

6TH ASIAN PACIFIC POSTAL UNION CONGRESS



A special changeable date stamp was used at the Rotorua Philatelic Sales Centre from 26th November, 1990, from 26th November, 1990, to 7th December, 1990, to mark the 6th Asian Pacific Postal Union Congress.

GRAND LODGE OF NEW ZEALAND



GRAND LODGE OF NEW ZEALAND
CENTENARY
30 NOV 1990 CHRISTCHURCH N.Z.

A special pictorial date stamp will be used at the Christchurch Philatelic Sales Centre on Friday, 30th November, 1990, to commemorate the Centenary of the Grand Lodge of New Zealand.



A special pictorial date stamp was used at the New Zealand Post stand at the 20th International Ornithological Congress held at the University of Canterbury on Monday, 3rd December, 1990.

AN INTRODUCTION TO THE FIRST DECIMAL DEFINITIVES OF NEW ZEALAND

R.G.DARGE

Continued from page 83.

COIL STAMPS

The coil stamps are of two types:-

- a) for use in stamp vending machines.
- b) for use in Post Office counter appliances.

a) Stamp Vending Machine Coils.

The 1 cent, 2 cent and 2½ cent stamps can be purchased from stamp vending machines situated at principal Post Offices throughout New Zealand.

The stamps are specially prepared into rolls by the Post Office from the stamps sold in the sheets. They are issued sideways from the machine with the right side of the stamp emerging first.

The selvages are removed from the sheet with the exception of the left side which is trimmed to leave approximately 1/8th of an inch. The sheets are then guillotined horizontally and the strips then joined by overlapping the right edge of the strip onto the selvedge edge of the left side. It follows that a join will be found on every tenth stamp.

The 1 cent and 2 cent and the sheet fed printing of the 2½ cent were perforated from the right side, consequently the coil joins show perforations. The printings on the web were perforated from the left side and, consequently, coil joins will be found without perforations.

Single stamps are difficult to distinguish from stamps in the sheet but often the perforations are blunted by the guillotine. The stamps can also be found with scratches, pin holes through the left frame of the stamp or two 'V' shaped tears in the margin. This is due to the roll being improperly fitted into the machine. The two large cogs which control the release of the stamps are revolving on the stamps instead of the perforation holes.

Varieties common to the sheets will obviously be found in the coils, but a fortune could be lost in the gamble of obtaining one.

b) Counter Coils.

In order to facilitate sales of stamps at busy Post Office counters, a device was constructed to hold the denominations most in demand. A full treatment of the subject can be found on page 129 of Volume 1V of the Postage Stamps of New Zealand.

Rolls or coils made up from two sheets are different in

appearance and construction from those of the stamp vending machines. In order for the counter clerk to balance his accounts, a quick reference is provided by numbers inserted between every ten or twenty stamps, depending on the make-up of the sheet rows.

It was anticipated that the counter coils would be on sale during 1967 but it was not until March of 1969 that coils began to appear. It seems that the use of the counter appliances was discretionary and that few Post Offices used them.

It had been anticipated that the coils would follow a similar pattern to those of the 1960 set, but in fact they are the very antithesis.

Eight denominations, 2½ cent, 3 cent, 4 cent, 6 cent, 8 cent, 10 cent (new), 15 cent (new), 20 cent (old and new) have been issued, the 20 cent (new) appearing on the 8th April, 1970, and replacing the earlier design. The rolls were made up by the New Zealand Post Office and it would be difficult to find a more incompetent job of manufacture. Some values have been guillotined vertically and others horizontally and in many cases the perforations have been totally removed from the margin of the stamps.

The coils had obviously been in storage for some time as the majority of them are from the first printing of the different values. Many of the coils are made up from different cylinders in the same coil. Sheet markings can be found beneath some of the coil numbers. The 4 cent and 6 cent wrappers are dated by rubber stamp either March, 1968, (in red) or March, 1968, or April, 1968, (in green).

The positioning of the numbers varies between the values as follows:-

2½ cent, 3 cent and 20 cent	- number inverted.
4 cent, 6 cent and 10 cent (new)	- number sideways, reading downward.
8 cent (old)	- number sideways, reading upward.
15 cent (new)	- number upright.
20 cent (new)	- number sideways, reading downward.

The coils are numbered 1 -19 in all values except the 8 cent (old) and 15 cent; these values being numbered 1 - 29. Different coloured wrappers were used for each value except that the 8 cent (old) and 15 cent used the white 10 cent wrapper, rubber stamped in red with 8c - \$24 and 15c - \$45 respectively.

A full summary of the differences is given in the Appendix 'D', to be published later in the series.

Jos Gregson reports in the Royal Philatelic Society of New Zealand Newsletter of January, 1970, at page 7, that the varieties in make-up are quite numerous and the numbers can be found:-

- i) Double.
- ii) Offset on the back.
- iii) Omitted.
- iv) Printed on the stamp.

v) Broken.

The lead and tail strips of the 2½ cent and 3 cent have been seen with double perforations.

One roll of the 8 cent and the 10 cent are known to have been torn during manufacture. The break in the 10 cent appears in two places between coil 8 and 9. The first break is at coil 8 and four stamps from another strip have been joined by a piece of brownish paper. The coil number has been stuck on top and is crooked. The second join is to the four stamps from the other strip. A different strip of six stamps has been joined in by the right selvedge of the four stamps.

It has been reported that a coil (number 7) has been seen on the 4 cent with a smaller '7' and printed in a deeper red. This suggests that a new set of numbers may have been printed for the coils.

Te Aro Coils.

A remarkable discovery during early 1970 was the unofficial issue of counter coils manufactured by the Postmaster at the Te Aro Post Office in Wellington.

An enquiry revealed that the staff had made the coils for their own convenience and once discovered by higher authority, the remaining coils were withdrawn.

The values manufactured were the 2½ cent from cylinder 2A1A(3), the 5 cent, 8 cent (new) and 20 cent (new). It is interesting to note that neither the 5 cent nor the 8 cent (new) was issued in the normal official coils.

The coils were made up by tearing sheets into vertical strips for the 2½ cent and 5 cent and horizontal strips for the 8 cent and 20 cent. The strips were then joined by the selvedge and numbers inserted. The numbers were either handwritten in biro, stamped in black from an ink pad or stamped by a numbering machine. In some cases the numbers have been crossed out and new written numbers inserted in biro.

The coils were on sale for approximately four months and were sold unseen by collectors for most of the term. A number of examples of the different types including one complete coil of the 5 cent are known to be in collections.

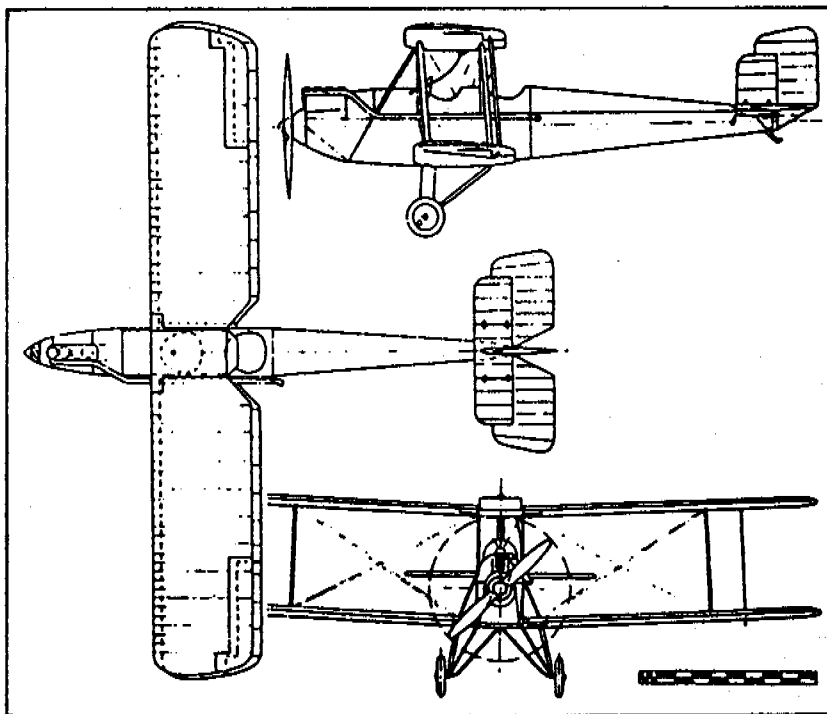
There is little doubt that a scarce variety has been created and examples are not cheap. The make-up and inconsistency in numbering makes forgery a relatively easy matter. It would be nigh impossible to authenticate any example and the future could well see a surfeit of such coils on the market.

CAVEAT LECTOR - INSTALMENT THREE

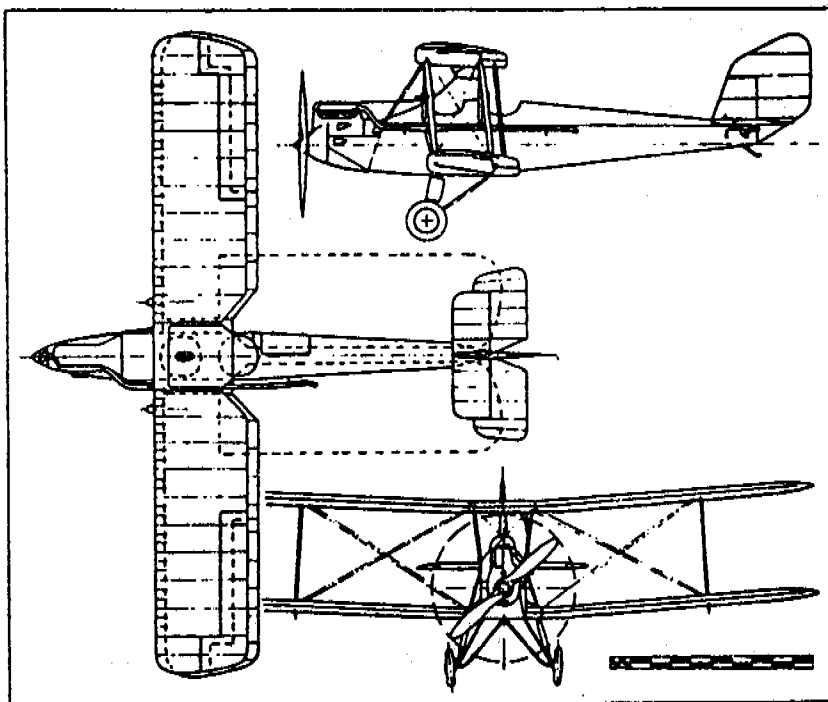
ALAN GARDINER

How many times have we read that Squadron Leader Mac MacGregor carried mail in the Spartan Arrows, ZK-ABU and ZK-ABZ? Throughout Volume 1 of 'Air Mails of New Zealand', reference is made to the Spartan Arrow, although in Volume 2, page 102, we find the aircraft being correctly referred to as a Simmonds Spartan.

According to 'British Civil Aircraft', Volume 3, by A.J.Jackson, both aircraft types were designed by the same man, O.E.Simmonds,



Simmonds Spartan



Spartan Arrow

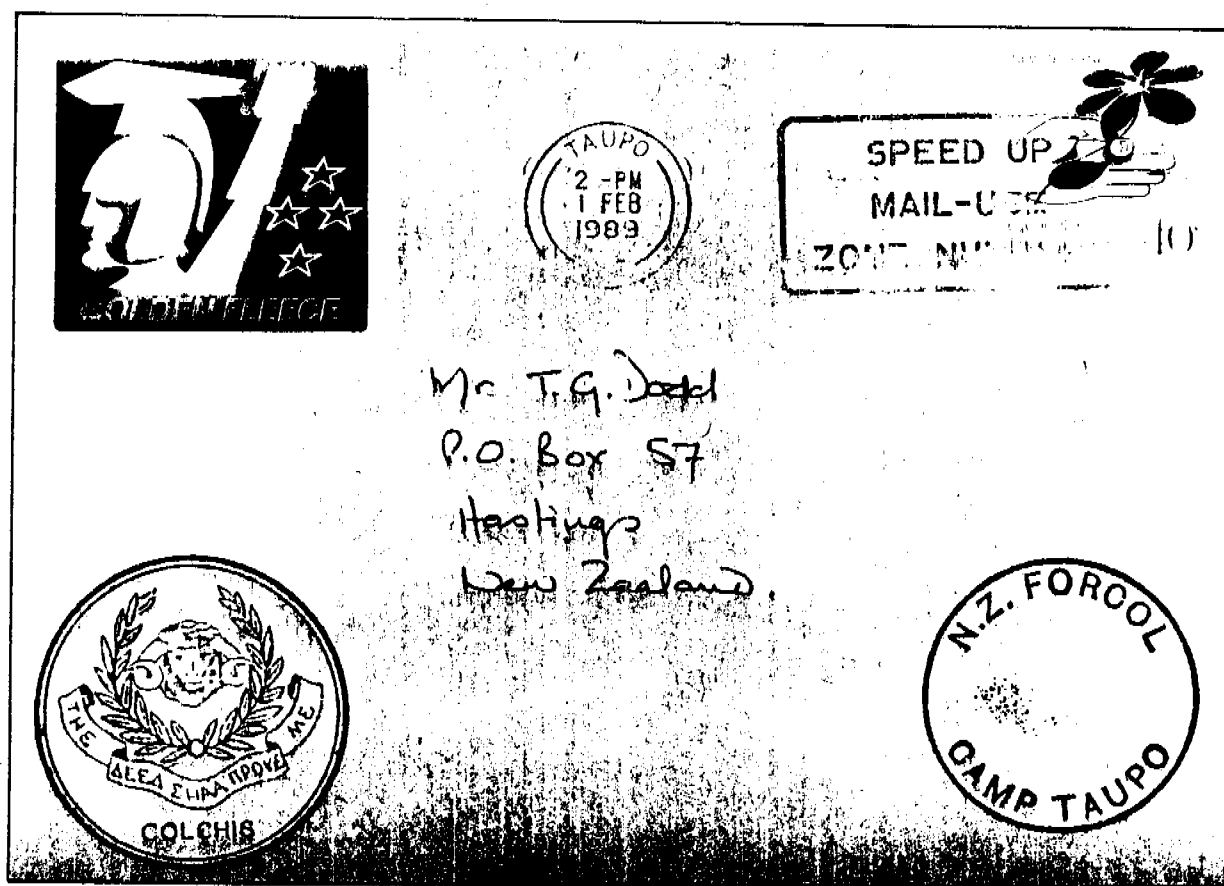
the Spartan for his firm Simmonds Aircraft Ltd., and the Arrow for Spartan Aircraft Ltd. - the same company reconstituted under a different name - so there were almost bound to be some similarities. Also, as it was quite common for references to be made to 'the Spartan' in log books and other paperwork, it was understandable that confusion should arise. However, the differences between the two can be seen clearly in the three view diagrams shown. The main recognition features are:-

1. The cylinder heads of the Simmonds Spartan are exposed, whereas those of the Arrow are cowled in.
2. The rudder of the Simmonds Spartan is cut away, whereas on that of the Arrow the balance horn extends forward to the front edge of the fin.
3. On the Simmonds Spartan the ailerons are interconnected, whereas on the Arrow they are not.

Regrettably, one of the souvenir labels issued by the Air Mail Society of New Zealand for its 1988 Air Mail Exhibition bears the title Spartan Arrow ZK-ABU, when, in fact, it should read Simmonds Spartan ZK-ABU.

EXERCISE GOLDEN FLEECE

TONY DODD



Joint military exercises comprising New Zealand and Australian Forces were held in the central North Island in January and February, 1989. Headquarters were at Taupo where mail was handled by a Military Mail Officer.

Illustrated above is a cover from a participant bearing two different cachets and a red, white and blue sticker associated with the exercise. The cachets were usually struck in green ink, but the 'N.Z.FORCOL - CAMP TAUPO' can be found struck in red ink.

LIST OF CONTRIBUTORS TO VOLUME 39

Dick Armstrong; B.T. Atkinson; Reg Auckland; Alan Baker;
 Allan P. Berry; David Bignell; George Branam; Cecil Bristow;
 John Campbell; C.G. Capill; Ann Carter; Ian Carter; R.G. Darge;
 Tony Dodd; J.G. Evans; Ian Fogg; Margaret Frankcom; L.J.G. Franks;
 Alan Gardiner; C.P.R. Goodwin; Alan Jackson; Martyn Jackson;
 Wally Jackson; K.J. McNaught; E.W. Leppard; G.E.C. Pratt;
 Alan Tunncliffe; John Watts; Derek Yardley;

INDEX TO VOLUME 39

Air Mail Comments	69
Annual Competition	102
Annual General Meeting - 38th - Report	3
- 39th - Notification	93
Annual Society Auction	77
Appeal from the Packet Secretary	9
Auction Realisations	9
Award of Honour, New Zealand Philatelic Federation	98
Belgium Relief Fund, 1914 - 1918	1, 18, 83
Boer War Covers and Postcards of New Zealand	66
By Express Camel	21, 24
Caveat Lector - First Instalment	69
Caveat Lector - Instalment Two	86
Caveat Lector - Instalment Three	108
Changes in Packet Circulation Arrangements	101
Competition - Wot Me?	102
Courier to Courier	62
Displays to Local Societies	103
Dr. J.F.S. (Frank) Hay, M.D. - Two Philatelic Covers	90
Editorial	2, 22, 40, 58, 76, 94
Exercise Golden Fleece	110
First Decimal Definitive of New Zealand	
Acknowledgements	14
Booklet Stamps	80
Coil Stamps	106
Foreword	13
Preview of the Decimal Set	15
Printings of Bradbury, Wilkinson & Co. Ltd.	64
Printings of Harrison & Sons Ltd.	51
Printings of Thomas de la Rue & Co. Ltd.	29
Forces Postal History - A Correction	50
Forces Post Office 5 - Singapore	37
Fragile Articles Through the Post	92
Kingsford Smith's Crossings of the Tasman Sea	86
Map Envelopes	54
Maritime Parks	
Bay of Islands Maritime and Historic Park	47
Hauraki Gulf Maritime Park	10
Marlborough Sounds Maritime Park	26
Meeting Reports	
Saturday, 25th November, 1989 - A.G.M. and Kiwi Day	3
Saturday, 27th January, 1990 - Annual Competition	22
Saturday, 31st March, 1990 - Queen Victoria	
First Sideface Definitives	41

