

C.P. NEWSLETTER MONTHLY

FOR COLLECTORS OF NEW ZEALAND STAMPS

VOL 38 No. 8 MARCH 1987

A confidential source of information and advice for philatelists and collectors.
Published by CAMPBELL PATERSON LTD., AUCKLAND, NEW ZEALAND.
Subscription \$20.00 Registered as a magazine at POHQ, Wellington.

ISSN 0112-8388

All lots offered in this Newsletter are unconditionally guaranteed as genuine and as described. They are offered subject unsold and will be sent on approval to known clients. Postage, insurance, handling extra, please

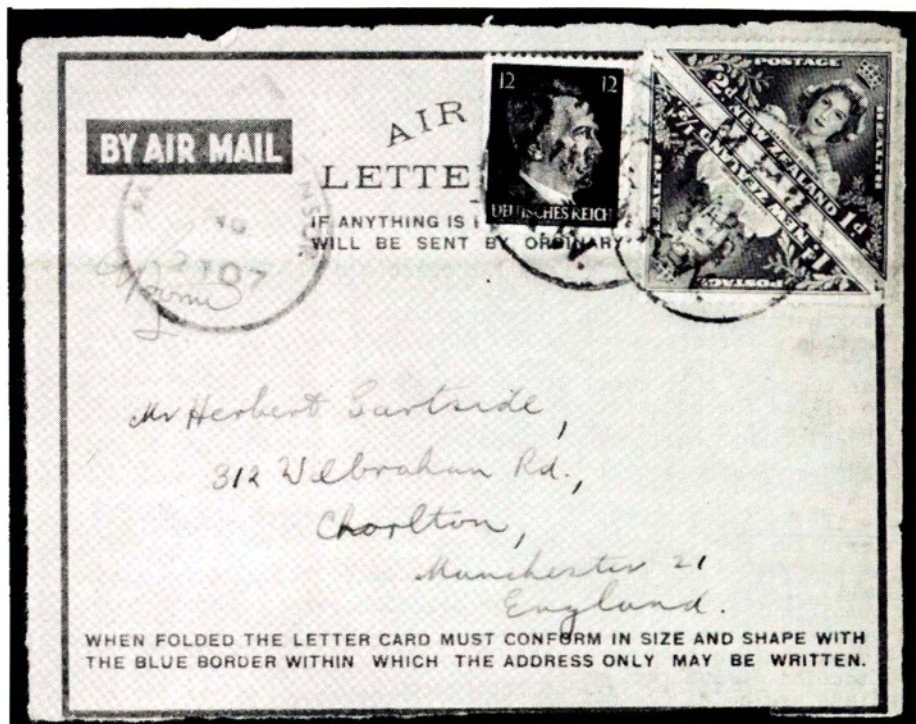
The information contained in this Newsletter is private to subscribers and unauthorised reproduction is expressly forbidden

Postal orders to P.O. Box 5555, Auckland, 1, New Zealand.

To obtain more detailed descriptions of the material offered in this Newsletter or to place orders, phone us COLLECT, NOW, on 793-086 Auckland.



EXCELLENCE IN NEW ZEALAND STAMPS



READERS' POSTAL HISTORY QUERIES -
NEW SECTION - See inside

CAMPBELL PATERSON LIMITED
P.O. Box 5555, Auckland 1, New Zealand
Room 404 Canterbury Arcade
Queen Street, Auckland.
Telephone 793-086



UK: P.O. Box 17, Woking, Surrey, England



NZ NOTES - WARWICK PATERSONREADERS' QUERIES

Mr. George E. Dixon of Peterborough, U.K., has written wondering whether we have ever considered having a Readers' Queries section. Although it has never been formalised as such, CPNLM has always contained questions and theories raised by clients, particularly where they are related to philately. In turn, this has brought forth rebuttal and counter argument and conflicting observations, all of which are the lifeblood of philately. Rather than presenting solely the definitive research of accepted experts, CPNLM "ethic" has consistently been to give an airing to others' ideas, embryo theories and "research in progress".

Mr. Dixon, however, has made an excellent suggestion and one which I think lends itself ideally to postal history questions. One of the reasons for this is that so much more work is being done in postal history these days that to pose a question and illustrate a cover or postmark will give all our readers, wherever they are, the chance to compare with their own material - philatelic or postal history - and may bring forth more information. So, here it is then - whenever they are there to be asked "Readers' Queries" - philatelic or postal history!

Illustrated is a "front" of a wartime Airletter form, sent in by Mr. Dixon which bears an interesting combination of stamps. The postmark is "MPO/15 AP 44/KW". Volume V PSNZ records several different examples of this type of Military Post Office date stamp used by New Zealand Forces overseas, but the interesting thing about Mr. Dixon's item (as readers will observe) is the 12 pfennig Hitler's head, placed alongside the 1d. and 2d. 1943 Health triangulars. Mr. Dixon surmises that the 12 pf may in fact be a forgery, used on the cover by a serving New Zealand serviceman (army). His own memory of stamp usages during the war suggests that these German stamps were not readily available to allied forces until early in 1945. The rough printing of the German 12 pf. might indicate its being a forgery.

Readers' comments?

Is It The Best? "The days of finding a bargain anywhere in the world are over, for most people have been made aware of current market values by the press, travellers, and the auctions. Every year, though, a story appears in the London *Times*, with almost suspicious regularity, about an astute buyer's discovery and purchase of a small Raphael painting or a drawing by da Vinci in an antique shop or in the attic of a country manor for a fraction of its real worth. One may wonder cynically if these finds are baits put out by the London Antique Dealers Society to fan the fires of hope in collectors' breasts.

Many wealthy customers would like to believe that whatever they may be buying is the finest of its kind in the world, and, of course, there are always salesmen who are only too willing to give them that assurance to make the sale." "Whenever I am asked, 'Is this the best?' I am careful to reply, 'This is the best available at this time,' or 'This is the best within commercial possibilities.' So, as we discuss the search for the best, or the finest, let those terms be understood within the limitations set forth." From "Quest for the Best" by Stanley Marcus, former Chairman of Neiman-Marcus.

NEW ZEALAND POST LAUNCHED - By Alan Meek

New Zealand Post Ltd will take over responsibility for postal services in New Zealand from 1 April. It is one of three companies established following the splitting of the former New Zealand Post Office into separate Postal, Banking and Telecom businesses.

A new publication, "Focus on New Zealand Stamps" will replace the "Philatelic Bulletin". Like the Bulletin it will be published twice a year, in April and September, and distributed free to some 60,000 philatelists in New Zealand and overseas.

Philatelists will, initially at least, notice few other changes. New Zealand Post will continue to operate the mail order service from the Philatelic Bureau in Wanganui. This, together with the network of Philatelic Sales Centres in major cities, will continue to provide philatelic customers with the same high level of service they have come to expect.

The New Zealand Post symbol is a stylised red envelope above the word "POST" in black. Look out for it on new philatelic products.

The New Birds - 40¢ and 60¢ Concurrent with the introduction of new postal rates on 2 February 1987, the latest two in the popular and beautifully designed Birds series appeared.

In the 40¢ two types of booklets also appeared - those for sale by Post Offices and those for sale by agencies. As usual, the booklets were made up from the main sheets, because there are only 50 stamps in each sheet. One sheet is used to make up five complete booklets of 10 stamps in each booklet. A new innovation is that the booklets come in blocks of five ready for separation and there is no problem with guillotining as they tear naturally apart at the perforations for the stamps and at lines of roulettes for the covers.

Biggest news on first day of issue was that there are two distinctly different papers which have been used for the 40¢. On the one hand (believed to be an indigenous Australian paper) the appearance from both front and back is toned - an almost yellowish effect. This paper appears to be phosphorised as it fluoresces brightly under UV. All of the booklets seen to date have been made up from this toned paper. The other paper is believed to be an English supply and is brilliant white, but does not fluoresce brightly under UV and is presumably not phosphorised. This is a catalogue listable variation and we have available a limited number of First Day Covers with an example of each paper of the 40¢ to first comers.

Arms Type Fiscals - Corrections Several errors appeared in the article on Arms Type Fiscals in our last Newsletter. Firstly, the terms "horizontal" and "vertical" were transposed for Cowan paper and Wiggins Teape paper. In fact, Cowan is horizontal and Wiggins Teape is vertical. Another misconception is that printings on single watermark (W7) paper have centred watermarks. As the single watermark paper was designed for use with smaller stamps, this is incorrect.

My thanks to Ken McNaught for pointing out these gremlins. ➔

FOUR

Opening a New Post Office - The Post Office in New Zealand is about to be split into three entirely separate corporations. They are TELECOM, NEW ZEALAND POST and POST OFFICE BANK. Clearly, all of these functions have been covered by the old Post Office and lived side-by-side in uneasy cohabitation.

However, an article in the National Business Review of 30 January 1987 confirms collectors' worst fears about the "old" Post Office.

Apparently there have been enormous difficulties in the dissolution and the subsequent reconstruction to take place on 1 April. According to NBR the crunch for the Post Office came in August/September 1985. As a result of a POSB loans fiasco, the Post Office unexpectedly asked for 150 million dollars extra in the Supplementary Estimates. Their request raised eyebrows - and tempers - around the Cabinet table. "I remember being quite astonished" Prime Minister David Lange told NBR "and I was determined that we were just not going to do that sort of thing".

Associate Prime Minister Richard Prebble was more specific. Said Prebble - now hear this philatelists, one and all - "All I can say to you is that it became apparent to the Cabinet Committee that the Post Office was not being customer-driven. Other things were driving the Post Office and the things customers really wanted were not being provided, even though customers were willing to pay". "At that point you begin to wonder what the heck is going on".

NBR quotes an astonishing, but true, example of the Post Office's lack of infrastructure. No-one in the present Post Office has ever had to go to the market place for a loan. Till now, when the Post Office wanted money, it asked the Government for it. NBR comment - "Lobbying politicians is not the same skill as prying open the wallets of bankers".

Financial management and marketing are all being provided in the new corporations by the hiring of outside advisers.

But the headaches have only just begun and philatelists' fervent prayer will be that services remain unaffected in the short term. NEW ZEALAND POST will take over retail Post Offices. Where TELECOM and POST OFFICE BANK want to offer their services in the same office they will contract with POST to carry them out. In many cases (especially in the cities) TELECOM and POST OFFICE BANK will shift to new retail premises. But harder to work out, says NBR, is how to divide major assets like Post Office computers which until now have been shared among the three corporations. The Post Office Union engineered a Public Relations campaign which led to a successful letter-writing campaign aimed at preserving the future of rural Post Offices and other services. Many Post Office workers see the reform almost as the death of an old friend and benefactor they have known all their working lives. Tom Beck, who is overseeing the POST's transition from the old regime to the new says - "It's the best thing that's happened to the Post Office in my thirty-five years here". May collectors hope for the same? Postmaster-General, Jonathan Hunt, says that we're the last of the OECD countries to do this with the Post Office - "We are way behind". →

"Thank you again, I can hardly wait for the next shipment ...
Sensational!" - Mrs. RAK, Washington, USA

I might even amplify Mr. Prebble's comment and say that the Philatelic Bureau has not just been customer-driven, but driven to desperation.

First we had a spectacular error of omission with the infamous FRAMA trial in Auckland. No notification was given and the only people who seemed to know or take advantage of it were dealers - the Post Office took a barrage of flak over the matter and later on was meticulous in providing information of the opening of further FRAMA installations throughout the country.

The Post Office bounced back with the TARAPEX miniature sheets which contained labels fully valid for postage. Helping finance a major exhibition was a determined attempt on their part to do the Right Thing by collectors. Unfortunately, the labels were only available from the Exhibition Committee. When the Committee came to advertise them and overseas collectors realised the extent to which they were subsidising the Exhibition by purchasing miniature sheets, a cacophony of protest went up in the philatelic press throughout the civilised world. A bemused New Zealand Post Office moved to repair the damage caused by what was, after all, a highly cooperative gesture on their part.

The shouting had barely subsided when the "CRISTMAS" errors appeared in the 18c, 40c, 1985 issue. The Post Office moved reluctantly this time and belatedly disowned the whole matter and shifted the blame onto as yet unidentified individual(s) who had somehow obtained sheets at or near the point of intended destruction. Thinly veiled warnings of legal action against those "trafficking" in the "stolen" stamps or even owning them seemed understandable, but should not have been allowed to obscure the fact that the whole affair was the result of a monumental breach in security. It certainly begged an answer - why was it allowed to happen in the first place? I asked one top official from the Post Office why error sheets could not have been destroyed in the Reserve Bank's own private furnace in Wellington. It appears that they were sent to the Waipa Mill because due to the explosive nature of the PVA gum used, this was the only safe place that such a vast quantity could be despatched. But whose fault was it really? Was an auditor present to supervise the destruction? Is there to be a prosecution?

A bewildered Post Office must have looked to the donation of the ex-archival ld. Claret block of four to help finance the N.Z. 1990 exhibition as some means of redeeming its reputation with a now incredulous overseas collecting public. But no. Renewed howls of protest followed, commentators relating the whole matter to the wholesale auctioning of Australian archival rarity material recently and the overtones of violence and retribution which accompanied that matter. How was the Post Office to know that this type of activity by Post Offices overseas has all been seen before and not always in a particularly favourable light? Conversations with Post Office officials suggested that they had just about had enough of philately for the time being. Doubtless, purely out of self-interest and in an attempt to finance an official trip to another international exhibition (in Sweden) some thousands of miniature sheets and booklets were overprinted (not the stamps, mark you) with the words "STOCKHOLMIA '86". Some New

* I'm not against this - only the F.R. seems to have gone wrong and the bidders stayed away at the auction for the Block. ➔

Zealand dealers were at the Exhibition or telephoned from New Zealand and managed legitimately to obtain a good percentage of the overprints offered. At last account material which cost several dollars only was said to be changing hands at amounts of up to NZ\$100. Like the TARAPEX miniature sheets and the FRAMA labels at the Auckland trial, souvenir material was never made available to the hundred thousand-odd clients on the Post Office's mailing list and they weren't about to let that pass lightly. The philatelic press overseas, if not rendered speechless, was by now choosing its words with a delicacy not often seen outside the pages of the rag press.

The major change in the structure of the Post Office seems a good time to assess what's been right and what's been wrong with Philatelic Services lately.

While I do not question the good intentions of P.O.H.Q. or their desire to encourage philately, I wonder if they realise how much their reputation - once unequalled overseas - has been clobbered by this unfortunate catalogue of events. In my opinion the best formula that the Post Office can ever adopt is to do what is traditional and regard the stamp trade and hobby as an impenetrable mystery best left to order its own affairs. If there's a lesson to be learned it's that when the Post Office becomes associated, either by design or by mistake, with the creation of scarce or rare philatelic items then those who missed out (by definition the majority) will be bitter - and that's bad for business. Full collector services are fine - and the N.Z.P.O., in my book, excels at them - but the Post Office should stick to regulated policies, communicate well and promptly and leave the unleashing of collectable rarities to chance.

That way all collectors have a fair go - and that's all most of them ever ask for.

Reprints of Definitives now on Phosphorised Paper A correction to Paul D'Aragon's note relates to the first appearance of the phosphorised paper and the 30¢ Kakapo reprints. In fact, the first 30¢ reprint to appear on phosphorised paper is that with two black kiwis in the selvedge, appearing in December 1986. The reprint with one kiwi was on the previous non-phosphor paper.

JUNIOR SPOT FROM VAL MCFARLANE

Laid Paper Paper which shows a pattern of water-marked lines set closely together, the lines being caused by the parallel wires forming the base of the mould, or covering the "Dandy Roll" in machine-made paper and usually crossed by wide-spaced lines. Described as "Vertically Laid" or "Horizontally Laid" according to the direction of the lines in relation to the design of the stamp. (See 2/- 1903 Milford Sound).

OLD ACCUMULATIONS, LETTERS, DOCUMENTS, ENVELOPES - CP LTD ARE
MAJOR BUYERS

GOODS AND SERVICES TAX

All prices in this Newsletter are quoted INCLUSIVE of GST. No addition will be made for tax on supplies to NZ clients.

OVERSEAS CLIENTS All offers in this Newsletter are subject to a standard 10% reduction. Quotations are in New Zealand dollars. The only exceptions are material sold "on behalf" which carries no GST. Ask for details when you order.

MAD MARCH MISCELLANY

A conglomeration of choice items.

FULL FACES

- | | |
|--|----------|
| 199 (a) <u>Ale (SG.33) 1d. Bright Orange-vermilion</u> Imperf star watermark. A superb used pair. Four-marginal and postmarks off the face/central. Lovely item - brilliant colour | \$495.00 |
| (b) <u>Alm (SG.110), 1d. Carmine-vermilion</u> Perf. 12½, star watermark. Superb unused copy (o.g.). Scarce - centred left | \$165.00 |
| (c) <u>Alq (SG.132) 1d. Brown Ditto</u> Superb unused with very early wear. The CP Catalogue describes all this issue as showing "intermediate wear). Our example this month must be the most "unworn" we have seen for years. Certainly from the earliest 1871 printings. Specialist item - fine. Red-brown shade | \$275.00 |
| (d) <u>A2n (SG.114) 2d. Indigo Ditto</u> Fine unused - lovely shade | \$220.00 |
| (e) <u>A2s (SG.133), 2d. Orange Ditto</u> o.g. - mint. Glorious fresh copy - centred left | \$71.50 |
| (f) <u>A3d (SG.117) 3d. Pale Lilac Ditto</u> Another lovely unused - fine shade..... | \$121.00 |
| (g) <u>A5k (SG.135) 6d. Dull Deep Blue Ditto</u> Superb unused again | \$165.00 |

ADVERTISEMENT STAMPS

- | | |
|---|----------|
| 200 (a) <u>DA5d, 3d. YELLOW, perf. 10</u> Advert in Red. Superb V1H block of four in perfect condition. Poneke, Sunlight: Kaitangata, Borningsons | \$330.00 |
| (b) <u>DA9c, 8d. Blue, perf. 10</u> Block of four in perfect condition. Kaitangata, Sunlight, Borningsons, Sunlight. Gorgeous | \$550.00 |
- Continued back page ...*

"Thank you for the excellent stamps that you are sending. I didn't appreciate what fine stamps were until I started receiving stamps from Campbell Paterson." - GBH, Whangarei

SELECTION OF COVERS

Almost a monthly slot now. Remember, CP are keen and substantial buyers of covers and postal history. We must replace stocks with early and rarity material immediately. Top prices paid.

- 205 (a) 1884 (22 Oct.) Registered to Leeds. Registered at Auckland (serrated oval) 22 Oct. 1884 and "Registered" handstamp in black. 1/- Second Sideface, p.12 x 11½ (D10a) with interpane gutter. Obliterator "W" in oval of bars "Hawera" (indistinct)(?) Enclosed "per Doric" cover is backstamped Lyttelton 28 Oct. 84 and Plymouth DE 13 and Leeds DE 15. Cover a little soiled - scarce \$175.00
- (b) 1901 (31 Jan.) O.P.S.O. NZ Treasury free official envelope (embossed Royal Arms on flap) with black border. Wellington to Gisborne (flag cancel). Fine. \$50.00
- (c) 1903 (11 Aug.) Awahuri to Hobart (redirected). Registered cover (spiked) of Endymion Hotel, Awahuri. Closed office 1874-1971; backstamps. Some smudging and adherence. "R" in circle is only registration marking. Fair \$50.00
- (d) 1901 (8 Nov.) NZ Government Life Insurance envelope Wellington to Nelson (GI 283). Superb condition with black mourning corner overprint. Wellington flag cancel. Superb and rare \$165.00
- (e) 1902 (2 April) Mangarimu (1896-1922) to England. Back stamps Feilding and RPO WN. Pair ½d. Mt. Cook Green p.14. Clean cover, slight foxing in stamps .. \$70.00
- (f) 1905 (1 Sept.) Nelson (sq. circle) to Mass. USA. Fine clean cover with scarce E8c (2½d. Lake Wakatipu p.11 wmk)..... \$50.00
- (g) 1906 (9 Oct.) Kiripaka (1893-1925) to Tasmania. Usual spiked, but a clean (vertical crease) large cover with superb strike \$35.00
- (h) 1924 (13 Mar.) Auckland to USA (slogan "Post Early etc" in boxes). Meter mark 1d. "42" used on Willson's Portland Cement stationery. Attractive (vertical crease). Very early use of the slogan (PSNZ Vol. III, p.431, type 15) \$50.00
- (i) 1926 (2 Mar.) Dunedin Exhibition to Levin. 4d. on very fine cover indeed \$250.00
- (j) 1930 (29 Oct.) 1930 Health FDC - very fine indeed. Highfield to USA \$200.00
- (k) 1931 (16 Jan.) "Dominion Airlines" (overtyped) label signed "AR" (Rosenberg) signed by Bolt (pilot). Stamp torn - label value removed..... \$100.00
- (l) 1931 (11 Nov) Palmerston North to Auckland (first flight) signed by McGregor. 237 believed flown. 3d. and 4d. Airm. Very fine \$75.00

"I have been a dedicated collector of New Zealand stamps for many years and when a friend introduced me to his CP Catalogue I felt the excitement of new beginnings. Congratulations." - GS, Vancouver, B.C., Canada.

1935 PICTORIALS

Including officials. Continuing our phenomenal highly specialised listing. Last month's offering created a stir in this most popular of NZ groups. Delay now can only operate to your detriment. Now the cullings from three fine collections recently purchased.

2d. WHARE

- 136 L4f, p.14 x 13½, W8 (Coarse)
- (e) L4f Ditto Perforation head study Plate 4B (blocks of four) five blocks. (a) Original state of Head "F" with bent pin at top end of first short row. (b) New pin inserted but at wrong end (bottom) of first short row. (c) The same variety perforated from top of sheet (top right corner). (d) New (error) pin and bent pin both failing to punch paper. (e) Error pin removed and new pin inserted in place of bent pin at top of first short row. Utterly irreplaceable! \$225.00
- (f) L4f Ditto Plate 5A block showing faulty pin in Head "F".. \$10.00
- (g) L4f Ditto Bottom selvedge block of four shows double perforations in bottom selvedge \$82.50
- (h) L4f Ditto Corner paper fold perf variety with grossly misplaced perfs in top left selvedge - block of six \$100.00
- (i) L4f Ditto The other faulty Tekoteko Plate 4B, Row 6/3. Selvedge block of six shows damaged ornament \$60.00
- (j) L4f Ditto Experimental counter coil strip of four - No. 7 rare \$330.00
- (k) L4f Ditto Amazing set of print varieties. (i) Single (u) pre-printing paper crease. (ii) Pair (m) streaked print. (iii) Pair very pale dry print. (iv) Top selvedge strip of six - heavily smeared area. (v) Bottom left selvedge strip of five pl. 2A inverted and reversed "set-off" impression \$115.00
- (l) L4f Ditto Another set of varieties. (i) Oily print single. (ii) Block of six dry print. (iii) Plate 5B top selvedge block of eight - major plate cracks (with pencil detail). (iv) Used single - wmk. inverted \$175.00

OFFICIAL 2d. WHARE

- 137 (a) L04b, p.14 x 13½, W8, HM Plate 1A. Nine only known to CP Ltd. VLH block. Clean with tiny light ink mark on gum - cat. \$1000 \$725.00
- Plates 1B or 2B each \$6.60
- (b) L04c, Perf. 14 (line) Ditto Plates 2A, 2B each \$55.00
- (c) L04e, p.12½ Ditto Plate 2A UHM \$700.00
- (d) L04f, p.14 x 13½, W8, Coarse HM Plates 3B, 4B, 5, 5A, 5B each \$3.85

2½d. MT. COOK/LILIES

- 138 (a) L5a, p.14 - 13 - 13½, W7, VM Plate 1 in block of FOUR (slight gum crinkle) \$50.00
- Or magnificent bottom right selvedge corner block of six - four UHM \$75.00
- Fine used \$15.00
- Or UHM \$12.50
- (b) L5b, p.13½ x 14, W7, VM, "WET PRINTING" Plate 1 in superb UHM block four \$50.00
- Or UHM block of four \$45.00
- Very fine used \$15.00
- UHM copy \$10.00

1935 PICTORIAL (Contd.)

- (c) L5c, p.14 - 13 x 13½, W8, HM Plate block of four, Pl. 1. Two stamps slight gum thins \$27.50
 Or two LH block of four, showing frame plate before damage, Rows 5 and 6 No. 5 and superb matching block of four with fine pencil drawing showing major damage to right frame at these positions - lovely material! \$300.00
 Similar block of four (2 x stains) shows the damage to Row 5 and 6, No.5. (Inverted watermark) \$22.00
 LH copy with wnk. inverted \$22.00
 Copy inverted wnk. (stain) \$2.00
 Or superb bottom right selvedge block UHM - very pale print \$55.00
 Single UHM (state shade) \$12.50
 Ditto - fine used \$15.00
- 139 L5d, p.14, line, W8, HM
- 139 (a) Superb UHM block of six plate 3. (Dp. Choc.). (Perfs through selvedge) \$50.00
 (b) Or 2 x LH block 6 - Red-chocolate (short head perfs) \$45.00
 (c) Or block of four (2 LH) pl. 3, Dp. Chocolate. Short head perfs \$35.00
 (d) Or inverted wnk. - superb UHM block of four \$75.00
 (e) Or UHM single \$15.00
 (f) Or stupendous top left corner selvedge block of fifteen (3 x 5) showing plate 3, R1/1 marginal frame flaw and Row 3/3 centre retouch (sky) with delicate pencil drawing of latter. No marginal marking opposite Row 5 \$135.00
- 140 L5e, p.14 (comb) W8, HM
- (a) Plate block of four (1 LH), plate 3 \$27.50
 (b) Positional block of four - 2 LH - shows frame re-entries Row 4/5, 5/5. Pencil sketch \$25.00
 (c) Corner selvedge block of four (2 x LH) shows frame plate crack and re-entries R10/1 and R10/2. Super pencil sketches \$50.00
 (d) Magnificent plate study piece with full pencil illustrations. Two UHM blocks of 10 (2 x 5) make up top left corner of sheet. Pieces show new Chocolate marginal marking in Plate 3, opposite R5 in left selvedge. R3/3 retouch. R3/1, R1/2, R5/2 centre plate flaws and frame re-entry Row 1/4. Three stamps stained \$150.00
- 141 L5f, p.13½ x 13½, W8 coarse HM
- (a) Plate 4 in block of nine (3 x 3). Few parted perfs - all UHM \$12.50
 (b) Block of four (2 creased) shows second centre plate re-entries R1/1, R1/2 and frame before crack R1/1. Pencil sketches (LV5f) \$45.00
 (c) Top left corner block of fifteen (3 x 5). Frame Plate 4 and second centre plate. Frame plate: R1/1 flaw, R2/3, R3/1, 2 and 3. Centre plate: R1/1, R1/2 re-entries, retouches R3/1, R3/3. Copious pencil sketches - vintage stuff! Perfs: comb head "G" \$75.00
 (d) Block of four, bottom right corner. Frame re-entries R9/5, R9/6, R10/5. Illustrations \$15.00
 (e) Pair bottom right selvedge. Frame plate partial offset \$25.00

	(f) Full double strip Rows 9 and 10, Nos. 1 to 6 with plate 4 and Burele band. Frame re-entries Row 9/4, 5 and 6 and Row 10/4 and 5. Glorious piece.....	\$50.00
	(g) Block of four Plate 4 with engine-turned design in selvedge. Comb head "H"	\$12.50
	Or block thus from opposite corner	\$7.50
	(h) Set of three blocks, second centre plate, frame pl. 4, including Rows 5 and 6 No. 2. (1) Shows no plate scratches. (2) Plate scratch appears vertically R5 and 6, No. 2. (3) Another scratch appears, plus selvedge mark opposite Row 5. Pencil sketches (1) and (2) perf. head "G" (3) perf head "H"	\$100.00
	(i) Plates as above. Three blocks. (1) Frame re-entries R5/5,6 and R6/5. (2) As above, but two dots appear in selvedge scratch opposite Row 5. (3) Plate crack and re-entry appear R4/6. Selvedge marking opposite R5 retouched. (1) and (2) perf head "G". (3) perf head "H". Illustrated	\$100.00
142	<u>L5g, Perf 14½ x 13½, W8, Coarse HM</u>	
	(a) Plate block p.14 UHM	
	Block 4	\$22.00
	Block 6	\$30.00
	Burele band (3 x 2).....	\$47.50
	(b) Block of six bottom right corner. Frame plate flaw R8/6 (illustrated). Re-entries R9/5, 6, R10/5	\$30.00
	(c) Small collection of fine blocks on coarse paper (L5f,g). Re-entries featured R1/1 (flaw), R2/3, R2/4, R6/5, R7/3, R8/3, R8/6, R9/5, 6, R10/4,5, R9/1. All very fine	\$50.00
	<u>2½d. MT. COOK (OFFICIAL)</u>	
143	(a) <u>L05c, p.14 - 13 x 13½, W8, HM</u> Top right selvedge block of nine (3 x 3) UHM	\$82.50
	(b) <u>L05d, p.14 (line), W8, HM</u> Plate block of four pl. 3, UHM	\$50.00
	(c) <u>L05d, p.14 (comb), W8, HM</u> Plate block of four pl. 3, UHM	\$50.00
	(d) <u>L05d, p.14 line</u> Lovely registered envelope "State Fire and Accident Insurance Office". 2½d. 1935 and 1½d. Geo. (MO4a) on fine cover (1939). 2½d. is R1/1 frame flaw (with selvedge)	\$75.00
	<u>3d. MAORI GIRL</u>	
144	(a) <u>L6a, p.14 x 13½, W7, VM</u> Bottom left selvedge block (no plate number). UHM	\$155.00
	Or copy from left selvedge with selvedge showing watermark letter of "New Zealand" in selvedge	\$38.50
145	<u>L6b, p.14 x 13½, W8, HM</u>	
	(a) Plate block of four, No. 2	\$195.00
	(b) Block UHM - wmk. inverted	\$265.00
	Or UHM single	\$55.00
	(c) Pair from top selvedge. Partial offset at top - UHM	\$100.00
	(d) Selection of used copies. Re-entries and flaws all illustrated in delightful pencil sketches. Block of four includes Re-entries R7 Nos. 6 and 7, single Row 6/4 and two major flaws	\$150.00

1935 PICTORIAL (Contd.)4d. MITRE PEAK

- 146 L7a, p.14 (comb), W7, VM
 (a) Plate block 1 in rare "Brown" shade - UHM \$150.00
 (b) Plate 1, Row 7/8, R7/10 in bottom right selvage block of six. Retouches to "i" of "Mitre" \$45.00
- 147 L7b, p.14 x 13½, W8, HM
 (a) Block of six as 146 (b). R7/8, R7/10 retouches ... \$22.00
 (b) Frame plate numbers 2A, 2B in strip of 20. Each ... \$40.00
 (c) Plates 2,2A and 2,2B in strips of 20 (bottom row).
 The pair 2,2A shows pre-reentry state Row 8/1,
 Row 8/6 and 2,2B shows the re-entries \$115.00
 (d) LH copy - inverted wmk \$15.00
 (e) Strip of three shows double re-entry on un-numbered
 centre plate Row 3/8 - superb! (Stain on R/E stamp) \$5.00
- 148 L7c, Perf. 14 (line), W8, HM
 (a) Plate 2B in superb 2VVLH, 2UHM block of four - scarce! \$440.00
 (b) UHM! Block of four \$330.00
 (c) Plate 3,2B in selvage strip of 20 - rare! \$770.00

- 149 L7d, perf. 12½, W8, HM
 (a) Plate 3,2B strip of 20 from bottom selvage \$357.50
 (b) Block of four, plate 3 (LH) \$75.00
 Or plate 2B \$75.00

MISCELLANY (Contd.)PIGEONGRAM

- 201 (a) VP8, 1/- Red Triangular of the "Agency" Flown item
on complete flimsey in superb condition. July 4 1900.
 No message and stamp is still fastening flimsey closure.
 (Clearly in this case stamp was not used to fasten
 flimsey to bird's leg). Cancellation Type 2 of G.B.P.A.
 Catalogued at \$6000 \$1250.00

1898 PICTORIAL

- 202 (a) E4a, 1½d. Boer War, Perf 11 Unhinged mint in block of
four. Absolutely outstanding \$80.00
 (b) E10b, 3d. Huias (redrawn), p.14 x 12½ - 13½ Perfectly
centred, perfectly UHM block of four. Unprecedented! \$300.00
 (c) E17d, 9d. Pink Terrace, p.14 Again - perfect centring,
perfect UHM block of four \$225.00

AIRMAIL - 1935

- 203 (a) V6c, 6d. Bright Blue, p.14 Perfect UHM example of
plate 3 (block four). Bright Aniline Blue. Lovely item \$440.00

KING GEORGE VI - OFFICIAL

- 204 (a) Small collection of plate blocks in scarce UHM con-
dition. ½d. Chestnut (M01d) pl. 101: 1d. Green
(M02d) pl. 128: 1½d. Scarlet (M04c) pl. 136: 2d.
Yellow-orange (M06a) pl. 140: 3d. Blue (M07c) pl.
138: 4d. Magenta (M08a) pl. 94, bl. 6: 6d. Carmine
(M010b) pl. 146: 8d. Violet (M011a) pl. 99 (bl.6):
9d. Brown-sepia (M012b): 1/- Red-brown (M013c) pl.
3A - 2: 2/- Orange and Green (M015b) pl. 1 - 1.
Well overdue for substantial price rise and in this
condition very scarce today \$1000.00