

C.P. NEWSLETTER

MONTHLY

FOR COLLECTORS OF NEW ZEALAND STAMPS

VOL 35, No. 4. NOVEMBER 1983

A confidential source of information and advice for philatelists and collectors.
Published by CAMPBELL PATERSON LTD., AUCKLAND, NEW ZEALAND
Subscription \$12.50. Registered as a magazine at POHQ, Wellington

All lots offered in this Newsletter are unconditionally guaranteed as genuine and as described. They are offered subject to unsold and will be sent on approval to known clients. Postage extra, please.

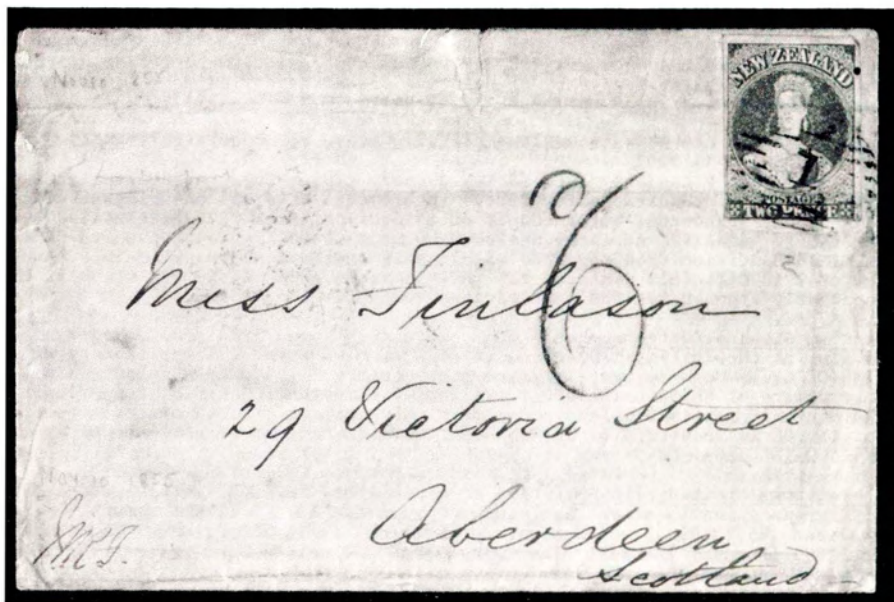
The information contained in this Newsletter is private to subscribers and unauthorised reproduction is expressly forbidden.

Postal orders to P.O. Box 5555, Auckland, 1, New Zealand.

To obtain more detailed descriptions of the material offered in this Newsletter or to place orders, phone us COLLECT, NOW, on 793-086 Auckland.



COLLECTING, BUYING, SELLING, OR FINDING OUT - CONTACT US NOW!



Lot 195(a), A2a (SG.2) 2d. London Print, Deep Greenish-Blue on rare cover

CAMPBELL PATERSON LIMITED
P.O. Box 5555, Auckland 1, New Zealand
Room 404 Canterbury Arcade
Queen Street, Auckland.
Telephone 793-086



UK: P.O. Box 17, Woking, Surrey, England



NEW ZEALAND NOTES - BY WARWICK PATERSON

OVERSEAS AUCTION REALISATIONS - "NEW ZEALAND" ON THE MOVE? Here are some results from auctions - mainly in Britain - during the first six months of 1983. They are particularly interesting in that when compared with auction results in London for a similar period at the end of 1982, the message comes through loud and clear that in certain clearly defined areas demand has quickened and the realisations are on the up and up. Glancing over the lists of estimates against realisations against catalogue values in list after list, I was struck by the evidence of strong, selective interest in certain major established varieties - 1940 Centennials, Officials, selected Full Face Queens and Postal History, Full Face Queens in Postal History lots, Full Faces on cover, selected George V, Pigeongrams, Edward VII Land and Victoria Land, Fiscals, Cinderellas like Auckland Island and Railway stamps, the occasional item of literature and, interestingly, major modern varieties. These, then, seem to be classifications to watch on the world market for the next six months. Showing poor results were pre-stamp Postal History items, Exhibition stamps, 1931 Healths, 5/- Mt. Cooks and generalised collection lots. Consistently these categories were either passed in or realised below estimates.

In some cases realisations fall short of catalogue values and to some extent this may be a result of condition, particularly in earlier issues. Nevertheless, the positive trend seems apparent, particularly where comparison is made with the auctioneer's estimates.

The overall impression is of the return of a highly specialised and selective group of buyers to the market - those who are prepared to go out and get what they want, but above all know what they want.

Never again more than now will it pay to buy top quality material at prices which after the last few years of relative price stagnation must be bargains crying out to be snapped up.

Here is a list of the sales which my review suggested were significant.

Stanley Gibbons, London - 16th/18th February 1983 Full Face Queens in a wide variety of condition drew little interest. This was an uninteresting sale by any standards, but a couple of collections from 1898 Pictorials through to '31 Airs and early Healths and from Chalon Heads through to QE II in mixed condition drew top bids of slightly over 10% above estimate. A set of 1940 Officials went for £26 (NZ\$60) and a copy of the ½d. Victoria Land, apparently from one of the certificates, sold for £140 (NZ\$322).

Stanley Gibbons Auctions, Hong Kong - 23rd/24th March 1983 An amazing block of four of the 2d. First Sideface of 1875 with watermark, large star, perforated 12½ (CP C2e) "Good colour, large part o.g to o.g." sold for HK\$4250 against an estimate of HK\$5000 (NZ\$870). A set of Christchurch Exhibition sold for the equivalent of NZ\$195 and a top marginal block of six, unmounted o.g. of the 1/- QE II, centre die, 1B, sold for HK\$1600 against an estimate of HK\$1500 (NZ\$328).

Robson Lowe Limited, 7th April 1983 A small New Zealand section produced little exceptional, except for a UHM copy of the 2d. QE II with stars - realised £65 (NZ\$150) and against an estimate of £30 a 1902 piece bearing the 1899 (August) 1/- Pale Blue "Pigeongram" adhesive, used, with the strike in black fetched £54 (NZ\$124).

Robson Lowe Limited, 13th April 1983 This was a more interesting New Zealand section with Full Faces, Postal History, Health, Christmas and modern definitive varieties. Two covers of 1870 from Russell to the Bay of Islands or the USA each bearing a pair of 1864 6d. Red-brown perforated, fetched £140 against an estimate of £50. Two Health collections both strong in Miniature sheets went for well above estimate, although a pair of 1931 Smiling Boys (fine mint) went for £76 (NZ\$175). Eye-openers were the modern varieties in Healths, Christmas etc. A 1959 3d. + 1d. with Pink omitted and another with Pink shift, plus 1964 2½d. with Red omitted, another with Red shifted and 1965 4d. with Green omitted, UHM, went for £151 against an estimate of £60. 1966 4d. with Deep Brown omitted sold for £248 against an estimate of £175 and a 1968 3c + 1c corner example from the Miniature Sheet showing Red ring omitted, catalogued by SG at £650, sold for £459 against an estimate of £200.

Stanley Gibbons Auctions, 14th/15th April 1983 Pre-stamp Postal History covers drew little interest, even though the Kororarika and Nelson Crowned Ovals were present. Two collections of Full Face Queens went for between 20% and 40% over estimate, although Exhibition and early Air stamps did a freeze. Some high value Arms Type went for a little over estimate and a block of four King Edward VII Land, used, not in top condition, went for £64 (NZ\$147).

Robson Lowe Limited, 4th May 1983 A reasonable New Zealand section, including Full Face Queens seems to have attracted closer interest. Realisations for most lots were up to 40% over estimate and most noticeably Lot 716, including a number of "apparently" imperforate Full Face Queens and a number of perforated issues "all irregularly shaped due to misplaced perforations and used - some faults" fetched £238 against an estimate of £80. Clearly, at least two bidders spotted something in this lot that the auctioneer didn't and that's really what I mean about "informed buyers"!

Robson Lowe Limited, 12th May 1983 A small New Zealand section produced little to write home about, although it has to be said that most of the lots appear to have sold and at prices up to 30% above estimate.

Stanley Gibbons Auction, 19th May 1983 - "Prestige" Stamp Auction The only New Zealand lot - 1 3d. Brown-lilac of 1862, watermarked, large star, serrated 14, but tiny thin - sold for £650 against an estimate of £600.

Stanley Gibbons, 15th/17th June 1983 Easily the most revealing sale of all during this period. The sale comprised 177 lots covering the full range of New Zealand issues and as such reveals much of the state of the market for New Zealand stamps in Gt. Britain about the middle of 1983. Pre-stamp material drew little interest and most lots went for less than estimates. Interest quickened when the Full Face Queens appeared on the covers and a number of items went for exceptional prices. Most went for over estimate. One lot of Full Faces, including two vertical pairs of 1d. Pale Orange-vermilion and 2d. with various postmarks, including GB accountability mark and manuscripts with some faults, sold for £95 against an estimate of £12. A range of eleven covers, Wellington to Napier, seven of them franked by perf 2d., two with 3d., and two with 1871 2d. Orange, Duplex cancellations fair to good, sold for £150 against an estimate of £54. One lot of the Second Sidefaces with a large block of 24 of the 5d., with advertisements on the back, variable condition, mostly unmounted o.g., sold for £360 against an estimate of £200. Selected George V items drew attention, including a copy of the 4d. plate 44 re-entry, Row 3/8 in block of six:- £44 against an estimate of £25. A top marginal block of four with plate 42 on a margin in the Salmon shade of the 1/- sold for £210 against an estimate of £80. 1931 Airs did well, with 3d. to 7d. blocks of four selling for £160, estimate £100. Most of this period in Airs and Healths went for above estimate. A collection on leaves with mixed range of Chalons and Sidefaces, Victory, George V, Silver Jubilee and 1960 Pictorials and later Definitives to 1971 - "earliest issues mixed condition, later mainly fine" sold for £200, estimate £75. Bulk buyers (dealers?) were in evidence with one series of five lots of parcel labels including at least 50 of the 10/- Queen on Horse, also the 2/6d., and other QE values and a few Arms - mixed condition as usual, - Some fine used stamps all sold at £82 (est. £50). A specialised collection of Healths went for £220 (est. £200) and a 35/- Arms Type fine and fresh o.g. with certificate, went for £850 (est. £700).

Robson Lowe Limited, 7th July 1983 An excellent tone to the sale in this small New Zealand section with over 50% of the lots going for estimate or well over. 358T Gt. Barrier Island, comprising a series of issues in quantities of up to ten including used and flimsies and pieces with some faults (39 items) sold for £350 against an estimate of £50 and that can't be bad.

JUNIOR SPOT FROM VAL MCFARLANE

DEFINITIVE AND COMMEMORATIVE STAMP ISSUES A definitive stamp is issued specifically for ordinary postal needs and placed on sale for an unlimited period, as opposed to the Commemorative, Health and Christmas issues, which have a set period of issue. Commemorative issues are stamps that are issued to mark special events such as Anniversaries, Exhibitions, Conferences and any other notable events. These issues are normally on sale with the current definitive issue.

► NZ NOTES (Contd.)

SHELLS ISSUES - SOME COLOUR VARIATIONS Tom Harp of Nelson sent in some interesting examples of the 20¢ and \$1 Shell. In the case of the 20¢ the very dark areas of the shell at top left and bottom right are in this example in the Royal Blue shade. In the case of the \$1 the shading areas towards the base of the shell at left and right appear in the same Royal Blue colour. I have seen examples of this, at least in the 20¢, and the frequency and way in which they have appeared suggests to me that this is some form of colour changeling. Other collectors who have seen this variety may care to comment and I would be particularly interested to hear whether anyone has approached the Post Office or printers about it and also whether anyone has seen mint examples, particularly in blocks or in the sheet (I can't believe that if the latter existed, someone - somewhere - wouldn't have reported it).

1970 PICTORIAL BOOKLETS (W10b) Dudley Carter of Invercargill has identified three different stages in the makeup of these booklets which he would like to confirm with other collectors. Note that these three stages all apply to the unwatermarked booklets which followed those with sideways watermark.

- Booklets with no Watermark
- (a) Shiny cream gum for all panes
 - (b) The pane with 3 x 1¢ has bluish gum and appears to be on a thinner, coarser paper
 - (c) Plain bluish gum throughout the whole booklet.

Any other observations to add?

"INTER ALIA" from PAUL D'ARAGON In a recent US auction list I observed a composite lot estimated at over US\$15,000. The description included the following - "A great many are re-gummed, especially those prior to 1925" and "We have not counted the readily discernible fakes and cleaned cancels." Overall it would suggest to the collector of US stamps that re-gumming and other nefarious pastimes are now widespread. Caveat Emptor indeed!

The NZPO is not the only postal administration which does well out of collectors. It has come to light that the British Post Office made a cool three million Sterling from the 1980 London International Exhibition. I hope they still spare the philatelist and his needs a thought now and then.

MAORI HEADS Collectors may have noticed perforation style variations in the above series. Fournier, the printers, have now advised me that, contrary to the information published before, a new departure was made in printing the top four values and this I believe to be a "first" in NZ philatelic history.

All four values were printed on the same master sheet, perforated and then guillotined into four separate panes of 100 stamps each. The format of the master sheet is as sketched:

| | |
|-----|-----|
| 60c | 25c |
| 35c | 45c |

and this explains the difference in perforation style on the right selvages.

However, it seems that this procedure was only for the first print and the first reprint. Sheets from the "one asterisk" series and subsequent reprints were produced in the same manner as the 15¢ always has been, viz. four panes per master sheet.

"I would also like to take this opportunity to thank you for your excellent sendings and kind attention to my requirements, despite my modest budget." - Nelson.

8c Rose - A "new" reprint? Collectors will remember that the NZPO has an arrangement with its stamp printers that all reprints should be marked on the plate block with some identifying feature. However, occasionally a reprint is made without this manner of identification (just to add spice!).

I have no idea how long the following reprint has been in existence, but the facts are as follows. In 1976 a new plate set 2A(x4) and 2B(x4) was issued for the 8c Rose and was perforated horizontally with the double comb. (This latter style can be identified by the absence of perforations in the left selvedge of the 2B plate). At some time subsequent to this, a reprint was made. The collector can identify it as follows:

The perforation is probably rotary in that both plates 2A and 2B are now perforated through the left selvedge. That they are reprints can be seen by the fact that some of the minor flaws previously present have been removed. Plate block collectors will see for instance that the flaw in the right petal, above "8" on Row 10/3 has now been removed in Plate 1B.

This reprint could be scarce and all plates 1B should be examined for the perforations through the left selvedge and the absence of the Row 10/3 petal flaw.

24c Map Reprint I have just sighted reprint blocks in the 24c Map "114" with and without bottom selvedge perforations (p.14½ x 14).

24c Stamp Booklets Readers should note that stamp booklets containing the 24c Map stamp with perforation 12½ x 12½ will shortly disappear. Varieties I have seen to date in these booklets include:


| | | | | |
|---------------|-----------------|-------|----------|-----------------------------------|
| 10 (\$2 - 40) | stamps attached | RIGHT | selvedge | |
| 10 (\$2 - 40) | " | " | LEFT | " |
| 10 (\$2 - 40) | " | " | " | with imprint, guillotined at base |
| 10 (\$2 - 40) | " | " | " | with imprint, "torn off" perfs |
| 10 (\$2 - 64) | all as above | | | |

It appears that both guillotining and hand separation are used to produce these booklets, depending on the availability of staff to do the job. In addition, strong variations in the blue background of the stamp have been seen corresponding with the first issue of the stamp in April 1982 (Pale) and the second issue of September 1982 (Dark).

New Definitives There is some speculation as to which definitive values are to be replaced next December. The NZ Post Office is playing this one very close to the chest. Enquiries to try to clarify the situation have been unsuccessful.

Health Miniature Sheets I believe that because the Health Miniature sheets were an odd size and would not fit onto a standard long envelope, the Health Camp Federation asked the NZPO to trim the selvedges of the 1983 sheets. Regrettably, this was not done and collectors had to mount the sheets on large envelopes. It is the practice of the PO to send an experienced officer to do the datestamping at the Health Camp Offices and at one such office he over-inked not only the stamp pad, but also his fingers. Result - a replacement of at least 100 covers to complaining customers. It could be worth a check! With the advent of self-inking postmarks it is hard to see how this could occur. A figure of \$3,000,000 has been quoted as the profit on last year's Postal operations and there is thus every reason for the NZPO to continue to serve Mr. Average Collector well.

Rita Angus Pre-stamped Envelopes I wonder if many collectors have thought of the implications of the 24c and 30c Rita Angus Pre-stamped Envelopes? It used to be that a stamp (or postal stationery) was issued from all Post Offices. Collectors now have to pay five times as much, and get them from a club (or even more from a dealer?). As George Bernard Shaw once said "Democracy is a good idea - it's a pity someone doesn't try it". Our Australian cousins seem to be able to supply pre-stamped envelopes from Post Offices at "face". (Mind you, a little bird chirrups that at least one club is already offering at a discount).

The Minerals - Perforation Varieties Collectors should not continue looking for perforated lower selvedges on the Mineral reprints. All previous issues of Minerals and Map stamps were supplied in parcels of 1000 sheets from the printers and contained 50% of each perforated and imperforated. The Mineral reprints parcels contained 1000 sheets all imperforated and it can therefore be reasonably assumed that Leigh Mardon have begun to use a new perforating method - any comments? 

NZ BOOKLETS Peter de la Mare reflects as follows on likely rarity of some of the Edwardian Booklet types.

"The New Zealand Stamp Collector" 1973, p.70-72, has the numbers of stamps made into booklets of various kinds and my arithmetic suggests -

293,340 ½d. Edwards (half with stars) from the unbarred plate
7,205,328 ½d. Edwards with bars

Ratio 1:24

472,392 1d. Dominions from the unbarred plate
(10,815,984 1d. Dominions with bars in booklets with Edwards
(7,329,312 1d. Dominions from the electrotype booklet plate with bars, in booklets with Georges

Ratio 1:38

I think also that it is likely that many more copies with bars have survived (in proportion). Also note that of the stamps from the unbarred plate, the early stamps were difficult to distinguish from those from the steel plate and that to prove from the selvedge that a stamp or pair is from the booklet plate one needs side-selvedge or top selvedge with watermark NZ Star; for stamps from the barred plate, any bit of selvedge with bar or partial bar establishes its origin.

The numbers of 1d. Dominions from the steel booklet plates seem to have been:

3,651,120 De La Rue paper
3,055,932 Jones paper
7,174,116 Cowan paper

The total from the electrotype plates was 18,145,296 so these are (or should be) at least as common as any of the varieties from the steel booklet plate.

ONE COLLECTOR'S VIEWPOINT - Paul D'Aragon

Part of the fun of collecting stamps is finding your own area of interest, which may be puzzling to your stamp collecting friends.

An aspect which fascinates me is that of the relative scarcities of stamps of NZ, comparing their relative prices, trying to work out why a cheap stamp is rare and an expensive one common and so forth.

Finding out printing quantities can be difficult, but the late F.H. Jackson, FRPSNZ published a lot of his researches. I list a few examples:

| | | | | |
|----------|--------------------------------|--------------|-----------|-------|
| CP K5a/b | GV 4d. Yellow | 354,360 | Mint Cat. | \$10 |
| Z02j | QV 2/- (Cowan) Official | 17,940 | | \$125 |
| Z06g | QV 5/- DLR | 71,700 | | \$225 |
| Z033a | Arms 5/- Vert. | 12,000 | | \$850 |
| Z033d | Arms 5/- Horiz. - '43 | 78,960 | | \$25 |
| U1e | Express (1939) | 12,000 | | \$75 |
| U2a | Motor Car Invert. wmk. | A few sheets | | \$50 |
| T3a | 1d. Smiling Boy | 74,800 | | \$300 |
| T5a | 1d. Pathway 1933 | 280,880 | | \$30 |
| T12a | 1d. Beachball 1940 | 284,750 | | \$6 |
| T32a/b | 1960 Health M/S | 1,000,000 | | \$60 |
| T45a/b | 1973 Health M/S | 130,000 | | \$25 |
| V5a | 1934 Transtasman | 83,080 | | \$100 |
| V5a(z) | 1934 Transtasman "N" flaw | 18,000 | | \$125 |
| S18c | 6d. Silver Jubilee | 320,000 | | \$50 |
| S030a(z) | Centennial 2½d. "Double "F" | 1,500 | | \$50 |
| S23a | Chamber of Commerce 4d. | 355,000 | | \$5 |

It is not my purpose to poke borax at the catalogues which after all reflect market forces. Rather it is to point out to "simplified" collectors that their combined efforts, even if inadvertent, have pushed up prices of relatively common stamps, those you can buy anywhere at any time. To my mind, this takes some of the fun out of collecting - it is surely the hunt for a stamp which is scarce that gets the old juices circulating!

In these days of multiple issues, I wonder that collectors do not form collections of varieties only. It would cost but little more than all the masses of issues seen today.

2d. LONDON PRINT ON COVER

SG.2 2d. Deep Greenish Blue One of NZ's first stamps on superb genuine cover, Auckland, November 10 1855 to Aberdeen (MR.5 1856). Backstamped Australian Liverpool Packet. Obliterator No. 1 ties the four-margined stamp cleanly to the cover and the pink is off the face. Horizontal crease affects stamp lightly and there are a few small tears. Flap torn. M/S 6d. in black. (Illus.)

A superb chance to obtain one of the great NZ rarities (Cat. \$3500) \$2750.00

FULL FACE QUEENS (CONTD)

More of the K.J. McNaught Full Faces. Super material and at fully condition-adjusted prices.

PERFORATED 12½ STAR WATERMARK

- 78 (a) A4a (SG.119) 4d. Rose Lovely copy, centred slightly right. Light Duplex cancel of Auckland touches face, but does not obscure. Slight creased corner perf \$375.00
- (b) A4a 4d. Ditto Beautifully centred example with Duplex cancel, central, light if somewhat indistinct and untidy. (Cat. \$700) \$325.00
- (c) A4a 4d. Ditto, Double Perforations at Top Good looking item with some faults. Weak corner (due to doubling) and pulled perf. at base. Good full colour - chance of an as yet unlisted variety \$275.00
- (d) A4a, 4d. Ditto - ON COVER Rather stained and tatty item and cut down a little - Flap incomplete. 10d. rate (via Marseilles) paid by 4d. Rose and p.12½ 6d. Deep Red-brown 4d. clipped two sides and 6d. two imperf. sides. "7" in oval of bars. Despite faults a remarkably attractive item \$200.00
- 79 (a) A4b (SG.120), 4d. Pale Yellow Obliterator central, but a super colour and nice copy \$45.00
- (b) A4b, 4d. Yellow Nice, well-centred copy. Central Dunedin date stamp, but a clear strike. Most attractive item \$62.50
- (c) A4b, 4d. Deep Yellow UNUSED Brilliant example of unusually deep colour - verging on the Ochre, but we offer it as "Deep". Good centring - a "majestic" Full Face \$200.00
- (d) A4b, 4d. Bright Yellow UNUSED Centred right, but o.g. and a lovely vibrant colour \$150.00
- (e) A4b, 4d. Ochre One of the big FFQ items. Shade utterly guaranteed. Slight adherence to o.g. - beautiful centring. Glorious item \$1500.00
Or used. Another brilliant example - possibly one of the best in existence. Pink (Whangarei) perfect over corner. Design intact if centred slightly lower left. This is a major offer \$950.00
- 80 (a) A5h (SG.122), 6d. Deep Red-brown UNUSED Lovely example - centred left. Very clear impression \$140.00
Or used (marking over face) - well centred \$25.00
- (b) A5h, 5d. Red-brown Superb used \$50.00
- (c) A5h, 6d. Brown (Reddish) Superb mint o.g. \$150.00
Good used copy \$30.00
- (d) A5h, 6d. Red-brown (double perfs) Copy with tear at side \$20.00
- (e) A5h, 6d. Red-brown Major re-entries. Two of the most "visible" re-entries in NZ stamps. "State of the art" re-entries! R16/3 fine used \$50.00
R17/1 - fair used \$25.00
- (f) A5h (SG.122a) 6d. Brown An amazing example in one of the deepest Browns we have seen. Centred left, but fine used. Whatever you have already, this example will contrast spectacularly \$75.00
- (g) Reprint in distinctive Brown - ungummed, unused \$100.00

Please turn to page 11

"Once again, thank you for the personal touch in your note and particularly for the trouble you took in your letter to discuss my stamp. I would rate as a minor CP client, but I feel free to present any puzzles to you, sure of a friendly response. Believe me, in this selfish world this is something to value and appreciate." J.A.D., Wellington.

1940 CENTENNIALS AND OFFICIALS

A real growth area if we ever saw one. This superb commemorative set is one to secure now. For years now we have had trouble replacing stocks. The current stocks will not last. Try a set mint and used for the old oak chest.

1d. MAORIS LANDING

- 200 (a) S26a, Green UHM 20c: LH 15c: MNSF 5c: FU 20c: CU 15c:
NSFU 5c: Block of four - UHM \$1: FU \$1
- (b) S026a Ditto, Official UHM 50c: LH 45c: MNSF 10c: FU \$2: CU \$1.50:
NSFU 25c: Block of four - UHM \$10
- 1d. CAPT. COOK
- 201 (a) S27a, Chocolate & Scarlet UHM 25c: LH 20c: MNSF 5c: FU 20c: CU 15c:
NSFU 5c: Block of four UHM - \$1
- (b) S027a Ditto Official UHM \$1.50: LH \$1.25: MNSF 10c: FU 10c: CU 8c:
NSFU 5c: Block of four UHM - \$6: FU 50c
- 1d. FIVE SOVEREIGNS
- 202 (a) S28a, Blue and Mauve UHM 40c: LH 35c: MNSF 5c: FU 25c: CU 20c:
NSFU 5c: Block of four - UHM \$2: FU \$1.25
- (b) S028a Ditto, Official UHM \$1.50: LH \$1.25: MNSF 10c: FU \$3: CU
\$2.50: NSFU 15c: Block of four FU \$15
- 2d. TASMAN AND CHART
- 203 (a) S29a, Blue-green & Dark Chocolate UHM 35c: LH 30c: MNSF 5c: FU 20c: CU 15c:
NSFU 5c: Block of four - UHM \$1.75: FU \$1
- (b) S029a Ditto, Official UHM \$1.50: LH \$1.25: MNSF 10c: FU 20c: CU 15c:
NSFU 5c
- 2d. TREATY OF WAITANGI
- 204 (a) S30a, Deep Green and Blue UHM 40c: LH 35c: MNSF 5c: FU 50c: CU 40c:
NSFU 5c: Block of four - UHM \$2: FU \$2.50
- (b) S030a Ditto, Official UHM \$3: LH \$2.50: MNSF 25c: FU \$4: CU \$3.75:
NSFU 50c: Block of four - UHM \$15: FU \$20
- 3d. SETTLERS AT PETONE
- 205 (a) S31a, Purple and Carmine UHM \$2.25: LH \$2: MNSF 25c: FU 50c: CU 40c:
NSFU 5c: Block of four - UHM \$9: FU \$2.50
- (b) S031a Ditto, Official UHM \$7: LH \$6: MNSF 75c: FU 50c: CU 40c:
NSFU 5c: Block of four - UHM \$35: FU \$2.50
- 4d. PROGRESS OF TRANSPORT
- 206 (a) S32a, Sepia and Purple UHM \$3.50: LH \$3: MNSF 40c: FU 60c: CU 50c:
NSFU 10c: Block of four - UHM \$17.50
- (b) S032a Ditto, Official UHM \$15: MNSF \$1: FU \$5: CU \$4.50: NSFU 50c:
- 5d. HMS BRITOMART
- 207 (a) S33a, Pale Blue and Brown UHM \$3: LH \$2.50: MNSF 30c: FU \$2.50: CU \$2:
NSFU 25c: Block of four - UHM \$15: CU \$12.50
- 6d. REFRIGERATED TRANSPORT
- 208 (a) S34a, Emerald Green and Violet UHM \$3.25: LH \$3: MNSF 35c: FU \$2: CU \$1.75:
NSFU 25c: Block of four - UHM \$16.00
- (b) S034a Ditto, Official UHM \$17.50: MNSF \$2: FU \$6: CU \$5: NSFU 75c
- 7d. MAORI COUNCIL
- 209 (a) S35a, Black and Vermilion UHM \$5.50: LH \$5: MNSF 50c: FU \$15: CU \$15:
NSFU \$2: Block of four - UHM \$26.50: CU \$75
(All used stamps guaranteed genuine)
- 8d. MAORI COUNCIL
- 210 (a) S35b, Black and Vermilion UHM \$4.50: LH \$4: MNSF 45c: FU \$2.50: CU \$2:
NSFU 25c: Block of four - UHM \$22.50
- (b) S035b, Ditto, Official UHM \$17.50: LH \$16: MNSF \$2.50: FU \$10: CU \$8:
NSFU \$1
- 9d. GOLD MINING
- 211 (a) S36a, Olive-green and Orange UHM \$14: LH \$12.50: MNSF \$2: FU \$7.50: CU \$7:
NSFU \$1: Block of four - UHM \$70: CU \$40

Another of the ever-popular multiple choice listings - gradings to suit every pocket and a fully specialised collection made possible at most reasonable cost.

As usual, the classifications: UHM - unhinged mint: LH - lightly hinged: MNSF - unused, not-so-fine: FU - fine used: CU - commercially used: NSFU - not-so-fine used: "W8" etc., - watermark type in CP Catalogue. PVA gum variations available where applicable - please specify. All plate blocks in appropriately sized blocks of stamps.

- 102 (a) $\frac{1}{2}$ c MANUKA
OD1a, p.13 $\frac{1}{2}$ x 14, W8 Wine, Green, P.Blue UHM 18c: FU 10c
 Plates: 1A(3) 1B(3) Imprint - ea. \$1.50
 Booklet Panes: No selvage letters - \$2.50:
 XA or XB (specify) - \$3
- 103 (a) 1c KARAKA
OD2a, p.13 $\frac{1}{2}$ x 14, W8 Yell-br., Yellow, UHM 10c: FU 10c
 Yell-green, Wine
 Brown, Yellow, UHM 15c: FU 10c
 Green, Wine
 Dp. Brown, Yellow, UHM 20c: FU 15c
 Green, Wine
 Plates: 1A(4) 1B(4) Imprint - ea 70c
 Booklet Panes: 6 stamps, no selv. letters -
 \$2.50: XA or XB in selv. \$3: 5 stamps +
 label, no. selv. letters - \$3: XA or XB
 in selvage \$2.50
- 104 (a) 2c KOWHAI-NGUTU-KAKA
OD3a, p.13 $\frac{1}{2}$ x 14, W8 Carm.-red, Green, UHM 10c: FU 10c
 Black, Yellow
 Carm., Dk. Green, UHM 15c: FU 10c
 Black, Yellow
 Plates: 1A(4), 1A(3)2A, or Imprint - ea. 70c
- 105 (a) $\frac{2}{3}$ c KOWHAI
OD4a, p.13 $\frac{1}{2}$ x 14, W8 Blue, Brown, UHM 10c: FU 10c: CU 5c
 Green, Yellow
 Dp. Blue, Brown, UHM 10c: FU 10c: CU 5c
 Green, Yellow
 Milky-blue, Brown, UHM \$3.50: MNSF 50c
 Green, Yellow
 Plates: 1A(4), 1B(4), 2A1A(3), 2B1B(3),
 2A(3)3A, 2B(3)3B or Imprint - ea. 70c
- 106 (a) 3c PUARANGI
OD5a, p.13 $\frac{1}{2}$ x 14, W8 P. Blue, Buff, UHM 10c: FU 10c: CU 5c
 Green, Purple
 Blue, Buff, Green, UHM 20c: FU 10c: CU 5c
 Purple
 Greenish Blue, Yell, UHM 10c: FU 10c: CU 5c
 Dk. Green, Purple
 Plates: 1A(4) \$3
 Plates: 1B(4), 2A1A(3), 2B1B(3), 2A(3)3A,
 2B(3)3B or Imprint - ea. 70c
 Booklet panes: No selv. markings \$2.50
 Selvage XA or XB (specify) \$2.50
- 107 (a) 4c MATUA-TIKIMU
OD6a, p.15 x 14, W8 Black, Purple, UHM 35c: FU 10c: CU 5c
 Green, Yellow
 Plates: 1A(4), 1B(4), 1A(2)2A1A, 1B(2)2B1B -
 ea. \$4.20
- 108 (a) 5c PIKIAREFO
OD7a, p.13 $\frac{1}{2}$ x 14, W8 Dp.Green, Olive, UHM 35c: FU 10c: CU 5c
 Lilac
 Dp. Green, Light UHM 40c: FU 12c: CU 5c
 Olive, Lilac
 Plates: 1A(3), 1B(3) or Imprint - ea. \$4.20
- 109 (a) 6c KOROMIKO
OD8a, p.15 x 14, W8 Carm., Red, Green, UHM \$1: FU 40c: CU 25c: NSFU 5c
 Yellow
 Plates: 1A(4), 1B(4) - ea. \$13.50
- 110 (a) 7c RATA
OD9a, p.13 $\frac{1}{2}$ x 14, W8 Grey, Red, Yellow, UHM \$1: FU 45c: CU 30c: NSFU 5c
 Green
 Plates: 1A(4), 1B(4) or Imprint - ea. \$7.50

TEN 1967 PICTORIALS (Contd.)

- 8c NEW ZEALAND FLAG
 111 (a) OD10a, p.14 x 14, W8a Blue, Red UHM \$1: LH 75c: FU 20c: CU 15c
 Plates: 1A(2) - \$10
- 10c TIMBER INDUSTRY
 112 (a) OD11a, p.14 x 14, W8a Brown, Dp.Green UHM \$1: LH 75c: FU 40c: CU 30c
 Plates: 1A(2) - \$10
- 15c TIKI
 113 (a) OD12a, p.14 x 14, W8 Green, Orange UHM \$1.50: FU \$1.50: CU \$1.25
 Plates: 1A(2) - \$40
 (b) OD12b, p.14 x 14, W8a Apple Green, Cerise, Black UHM \$1.50: FU \$1: CU 75c NSFU 10c
 Plates: 1A(3) - \$13.50
- 20c MAORI ROCK DRAWING
 114 (a) OD13a, p.14 x 14, W8a Black, Brownish Buff UHM \$2: FU 20c: CU 15c
 Black, Yell., Buff UHM \$2: FU 20c: CU 15c
 Plates: 1A(2) - \$22
- 25c BUTTER MAKING
 115 (a) OD14a, p.14 x 14, W8 Yellow, Lt.Brown UHM \$4: FU \$1.75
 Plates: 1A(2) - \$28
- 30c TONGARIRO NAT. PARK
 116 (a) OD15a, p.14 x 14, W8 Sky-blue, Olive-bistre, Green UHM \$10: FU 50c: CU 40c
 Plates: 1A(3) - \$70
 (b) OD15b, p.14 x 14, no wmk. Sky-blue, Yellow-bistre, Green UHM \$30: FU \$10: CU \$7.50
 Value Block - \$120
- 50c SUTHERLAND FALLS
 117 (a) OD16a, p.14 x 14, W8a Dark Green UHM \$6: FU \$1: CU 75c: NSFU 10c
 Plate: 1A - \$66
- \$1 TASMAN GLACIER
 118 (a) OD17a, p.14 x 14, W8 Ice Blue UHM \$45: FU \$10: CU \$7.50: NSFU \$1
 Deep Ice Blue UHM \$45: FU \$10: CU \$7.50: NSFU \$1
- \$2 POHUTU GEYSER
 119 (a) OD18a, p.14 x 14, W8a Magenta UHM \$40: FU \$40: NSFU \$5: Plates \$600
 (b) OD18b, p.14 x 14, W8 Olive-yellow, Plum, Light Blue UHM \$125: FU \$50: NSFU \$5: Plates \$1500
- 7c TROUT
 120 (a) OD26a, p.13, W8b Greenish-blue, Black, Yellow, Scarlet UHM \$1.50: FU \$1: CU 75c
 Plates: 1A(4) or Imprint - ea. \$10.50
 (b) OD26b, p.13, W8 Greenish-blue, Black, Yellow, Scarlet UHM \$1.50: FU \$1: CU 75c
 Plates: 1A(4) or Imprint - ea. \$10.50
- 28c FOX GLACIER
 121 (a) OD27a, p.14 x 14, W8 Yellow, Blue, Violet, Sepia UHM \$2.50: FU 30c: CU 20c
 Plates: 1A(4) - \$27.50
- 7c FISHING
 122 (a) OD20a, p.13 x 13, no wmk. Black, Lt.Blue, Gr-Yellow, Cerise UHM \$1.50: FU 50c: CU 40c
 Plates: 1(4), 1a(4) - ea. \$11.50
- 8c FRUIT INDUSTRY
 123 (a) OD21a, p.13 x 13, no wmk. Black, Lt. Blue, Gr.-Yellow, Cerise UHM \$1.50: FU 50c: CU 40c
 Plates: 1(4), 1a(4) - ea. \$10
- 10c TIMBER INDUSTRY
 124 (a) OD22a, p.14 x 14, W8a Yellow, Blue-green, Red-brown, Black UHM 80c: FU 20c: CU 15c
 Plates: 1a(4) - \$5.60
- 18c WOOL INDUSTRY
 125 (a) OD23a, p.13 x 13, W8 Multicolour incl. Orange-red UHM \$3: FU 50c: CU 40c
 Multicolour incl. Red-orange UHM \$3: FU 50c: CU 40c
 Plates: 1(4), 1a(4) - \$21
- 20c MEAT INDUSTRY
 126 (a) OD24a, p.13 x 14, no wmk. Black, Lt. Blue, Gr-yellow, Cerise UHM \$2.50: FU 70c: CU 60c
 Plates 1(4), 1a(4) - \$17.50
- 25c DAIRY INDUSTRY
 127 (a) OD25a, p.14 x 14, W8a Yellow, Lt. Blue, Red-brown, Black UHM \$5: FU \$3: CU \$2.50
 Plates: 1a(4) - \$42

CHRISTMAS APPROACHES

At a mad pace, too. By the time you read this there will be only so many days to Xmas. Is there no escape from the increasing toll?

YES - a copy of CP's Specialised Loose-leaf Colour Catalogue of New Zealand Stamps is pure encapsulated peace of mind. A haven of fun and enjoyment - a cure for insomnia. If you know someone who collects NZ stamps (or you think should collect NZ stamps) then this is the Xmas present to beat them all.

Still only (plus post) \$42

1940 CENTENNIALS (Contd.)

- (b) S036a Ditto, Official UHM \$10: LH \$8: MNSF \$1: FU \$10: CU \$8:
NSFU \$1: Block of four - UHM \$50: CU \$50
- 10d. (S28 SURCHARGED)
212 (a) S37a, Blue and Mauve UHM 50c: LH 40c: MNSF 5c: FU \$1: CU \$1:
NSFU 10c: Block of four - UHM \$2: FU \$5
- 1/- KAURI
213 (a) S38a, Sage-green and Deep Green UHM \$30: LH \$25: MNSF \$3: FU \$4: CU \$3.50:
NSFU 50c: Block of four - UHM \$135
UHM \$50: LH \$40: MNSF \$5: FU \$20: CU \$20:
(b) S038a Ditto, Official NSFU \$2: Block of four - UHM \$225

FULL FACE QUEENS (Contd.)

- 81 (a) A6m (SG.125) 1/- Yellow-green Superb unused - centred slightly right -
lovely colour \$200.00
(b) A6m, 1/- Deep Yellow-green Superb block of four and very rare. Upper
pair - marking doubled, but postmarks are light. Some perfs parted ..
Or block in similar condition in Dull Yellow-green shade - very scarce
indeed \$400.00
(c) A6m, 6d. Sap Green First time we've advertised this rare shade. This
is an excellent example - marking slightly over face, but well centred. \$350.00
(d) A6m, 1/- Very Pale Yellow-green Another fresh, striking example -
light pink. - fine used \$175.00
(e) A6m, 1/- Green Copy with major paper fold - excellent and spectacular
..... \$90.00
\$80.00
- 82 (a) Alq (SG.132) 1d. Brown Fine used, well centred copy in Reddish-brown
(extended plate wear) \$50.00
(b) Alq, 1d. Ditto Re-entries Row 4/11 - unused fine \$150.00
Row 19/3 unused fine (major doubling at top) \$175.00
Row 14/12 Fine used - doubling throughout lettering. A particularly
good unworn example \$100.00
Row 17/10 Good used \$50.00
- 83 (a) A2s (SG.133/4) 2d. Orange Superb used - superb! \$50.00
(b) A2s 2d. Vermilion As above - super used \$50.00
- 84 (a) A5k (SG.135) 6d. Blue Excellent used copy - lovely shade \$60.00
(b) A5k, 6d. Deep Blue Fair used copy of this scarce one. Good
appearance \$50.00
(c) A5k, 6d. Pale Blue Fine used copy \$50.00
(d) A5k, 6d. Chalky Blue Re-entry Row 17/10 - fine used \$85.00
(e) A5k, 6d. Pale Blue unused Beautifully centred o.g. example with
double perfs at top - lovely colour! \$200.00

"Having your excellent Catalogue in my possession for some months, I am beginning to wonder how I ever thought that I knew New Zealand stamps. I have learnt, and no doubt will learn a lot more in time to come, about the issues of your wonderful country." - VGM, Victoria, Australia

TWELVE

WHY CAMPBELL PATERSON REMAINS "NUMBER ONE" IN NEW ZEALAND STAMPS - AFTER 35 YEARS THERE

SEVEN "HONEST-TO-GOODNESS" REASONS - AND STILL ONLY CP OFFERS THEM TO YOU

- * AT YOUR FINGERTIPS IN THE CP SPECIALISED CATALOGUE! Everything you could need to know about NZ stamps. Colour, inexpensive updates - annually. Written by experts with your collecting security and pleasure in mind. Ask for the brochure or a copy on fourteen days approval.

"Looking forward to working with this wonderful book for the rest of my life (not often one can say that!)" - New South Wales

- * DELIVERED TO YOU IN CP NEWSLETTER MONTHLY Collecting advice, the latest in stamp news, market commentaries, hints for juniors, offers of superb New Zealand stamps ... \$12.50 per year. Write for a three-month subscription without obligation - FREE!

"For content and value-for-money the CP Newsletter surpasses any other philatelic publication I know of." - Auckland

- * A FULL AND TRUE VALUATION FOR YOUR NEW ZEALAND TREASURES When you sell, with CP you can be sure that your collection will be valued by an expert of many years experience who specialises full time in New Zealand stamps. The benefit to you is priceless - and it's yours for the asking - without obligation. We pay cash.

"I consider your valuation of \$14,000 for the collection is very reasonable and I have pleasure in accepting. I extend my warmest regards." - Christchurch

- * FRIENDLY, PERSONAL ADVICE AND ASSISTANCE It's good to know that there's a specialist firm which has built its reputation on two generations of simple concern for our clients' interests. It rounds out every contact you have with us. Just ask us.

"I do appreciate the help I have had from you people - your comments and suggestions at the time I was trying to sell my collection a few years ago were the most practical and sensible I received or had from quite a few interested parties. This is still remembered and appreciated." - By of Plenty

- * COMPLETE YOUR NEW ZEALAND COLLECTION IN COMFORT Budgeted monthly Mailings to fill your wants list at an outlay you set yourself - no obligation, no pressure - just easy collecting fun.

"Your correspondents are so right - your service, advice and choice of stamps is by far superior to other experiences I have had." - Southland

- * THE FINEST "NEW ZEALAND" STOCK IN THE WORLD Even the stamps are better.

- * ABSOLUTE SAFETY AND REASSURANCE CP is the only company that we know of to offer a twelve-month replacement or money-back guarantee.

"Your outstanding Catalog and Newsletter are a major factor in my decision to place all my stamp collecting efforts into New Zealand and Dependencies." - Connecticut, USA

Write, 'phone or call in and see us -

CAMPBELL PATERSON LTD
404 Canterbury Arcade
Queen Street
P.O. Box 5555, Auckland
New Zealand
Tel: 793.086

CP - QUITE SIMPLY A BETTER WAY TO COLLECT "NEW ZEALAND"